



# Construction Update

Moorhead Area Public Schools • November 2002

## Design of new elementary school approved

Since last spring, architects from Rozeboom Miller Architects and Zerr Berg Architects have been meeting with the district's Elementary Design Team to determine program needs for both the two remodeled elementary schools and the new elementary school.

Following review and discussion of three proposed designs for the new elementary school, the team requested a fourth design where the media center would be the central area of the school. After additional review of this new design, the Schematic Design of the new elementary school was completed and presented to the School Board.

At its Nov. 11 meeting, the Moorhead School Board approved the Schematic Design for the new K-5 elementary school, which will be built at 40th Avenue and 14th Street South.

Like the other two elementary schools, the new school will be organized into three learning communities — K-1, 2-3 and 4-5. The grades 2-5 learning communities are organized around the media center forming the heart of the school.

*See pages 4-7 for photos.*

## Breaking ground



With construction equipment looming in the background, approximately 40 students, School Board members, district employees, and community representatives prepare to break ground for the district's new middle school. *See page 2 for story.*

## Construction projects on budget

With the Schematic Design phase completed for all six of the school district's construction projects, the projects remain on schedule and on budget, according to information presented to the Moorhead School Board Nov. 11 by Terry Hart, senior project manager from Kraus-Anderson Construction Management Company.

The new middle school, which is already under construction, will cost approximately \$27 million, and the new elementary school is currently esti-

mated to cost \$11.7 million.

Additions and remodeling to Moorhead High School will be approximately \$13.9 million. Renovations to convert Robert Asp School and Moorhead Junior High to K-5 elementary schools will be approximately \$5.4 million and \$4.8 million respectively.

The remodeling of Probstfield Elementary School into a district education center is estimated to cost approximately \$1.8 million.

## On the Inside

Middle School Groundbreaking .....	Page 2
Middle School Construction .....	Page 3
New Elementary School .....	Pages 4-7
Educational Enhancement and Construction Project Updates .....	Pages 8-9
Construction Schedule .....	Page 10



## District breaks ground for new middle school

With a crowd of Chamber Ambassadors lending their support, approximately 40 students, teachers, School Board members, administrators, and other community representatives turned the first shovelfuls of earth at 4 p.m. Wednesday, Oct. 9 to break ground for the district's new middle school. Chamber Ambassador Douglas Krueger served as emcee for the groundbreaking ceremony.

The students attending the

groundbreaking at the site of the new school on 12th Avenue South and 40th Street were representatives of the current fourth, fifth, and sixth grade classes. These students will be sixth, seventh, and eighth graders when the new middle school opens in the fall of 2004.

Teachers participating in the groundbreaking represented the middle school design and implementation committees and Education Moorhead. The

students, teachers, School Board members and administrators were joined by a parent representative, the chair of the Facility and Grade Level Configuration Community Task Force, the co-chairs of Citizens for Effective and Efficient Schools, the mayor and city manager for the City of Moorhead, lead architects, and representatives from the construction management company.



Dr. Larry P. Nybladh, superintendent, reminds the crowd gathered for the groundbreaking that it is the responsibility of each generation to provide for the next.

### Board approves Design Development for new middle school

At the Nov. 11, 2002, School Board meeting, Ted Rozeboom, Rozeboom Miller Architects, presented information on the interior and exterior finishes of the new middle school and shared samples of the types of materials that will be used for the new school. Materials will need to be bid so final materials may vary from those presented, Rozeboom said. Following the presentation, the board voted to approve Design Development for the middle school.



The new middle school at 40th Avenue and 12th Street South will serve students in grades 6-8 after it opens in the fall of 2004.



Mayor Mark Voxland tells the gathered crowd how important the new middle school will be for the school district and community.



## Construction of middle school begins in October

Site work and foundation work for the middle school began Oct. 7. Weather permitting, work on the 230,000 square-foot school will continue through the winter.

The district is now advertising for bids for the structural steel and precast. Bids will be read Dec. 5, and the School Board will accept a bid at its December meeting.

See the district Web site at [www.moorhead.k12.mn.us](http://www.moorhead.k12.mn.us) for more photos.



Approximately five weeks after beginning work at the middle school site, workers complete forms in preparation of pouring concrete for the foundation of the school's three-story academic wing.



The south-facing side of the academic wing will be curtainwall allowing ample light into the spaces. Each level has three learning communities with classrooms for language arts, math, social studies, science and reading.



Heavy equipment hauls soil out of the area on the middle school site where the retention pond will be located.



Site work and foundation work, which began Oct. 7, 2002, continue at the site of the new middle school.



## Media Center heart of new elementary school

The new elementary school, which will be built at 40th Avenue and 14th Street South, will be organized into three smaller learning communities. Two learning communities are organized around the central media center, creating the heart of the school.

Schematic Design for the new K-5 school was approved by the School Board Nov. 11, 2002.

According to the Schematic Design report, conceptually the school is composed of three smaller “buildings” or blocks along a main “street.” The main street connects the student entry on the east with the faculty/staff and after-hours entry on the west.

Inside the easternmost block of the school, the East Lobby opens to the administration suite on one side of the main “street” and the K-1 learning community on the other side. The main street then flows into the other two blocks of the school.

The central block of the new elementary school contains the grades 2-3 learning community

flanking the media center on the first floor and the grades 4-5 learning community flanking the media center on the second floor.

Each learning community has a locker bay near the main corridor, a team resource room suitable for a classroom setting, and various enrichment classrooms, special education resource rooms and teacher planning spaces.

Classrooms on the north side of the main “street” include general music, an orchestra classroom, and an art studio on the second floor that is partially open to the media center.

The western block of the school houses the gymnasium, kitchen and the commons area, which looks out onto the teaching gardens.

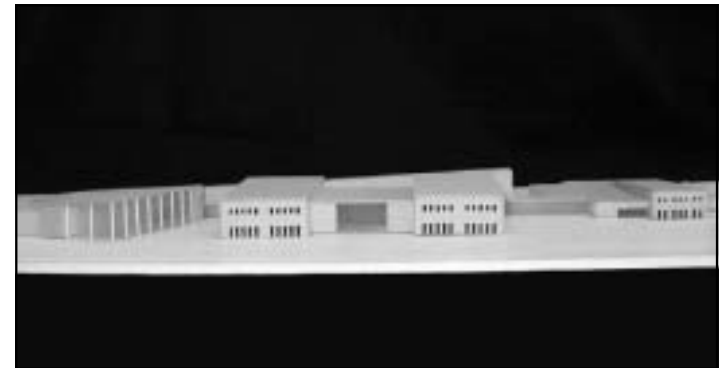
The West Lobby serves the faculty/staff parking lot, which also serves as after-hours event parking. The lobby opens into the commons and gymnasium, which along with the music suite can be closed off from the rest of the school for after-hours events.

Design Development of the

new elementary school is scheduled to be completed by December 2002.

Approval of Bid Package 1 would be in January 2003 with construction on the first bid package starting in February 2003.

Updates on the construction projects are available on the district’s Web site at [www.moorhead.k12.mn.us](http://www.moorhead.k12.mn.us) as work progresses.



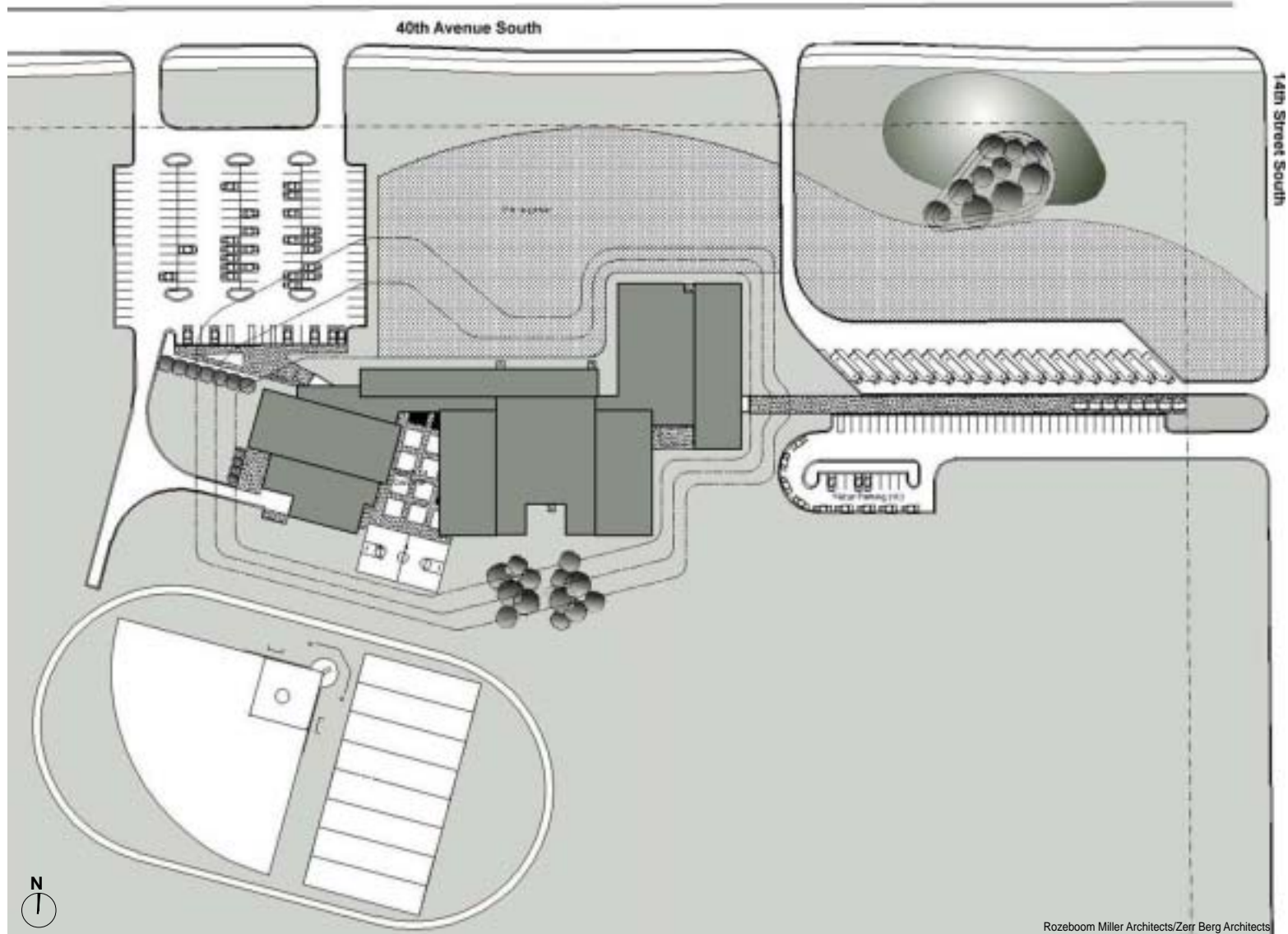
The western block of the school (left side of photo) houses the gymnasium and the cafeteria/commons area, which looks out onto the teaching gardens.



From the new elementary school’s East Lobby, a covered walkway extends from the building. On one side of the walkway is a drive for parent pick-up and drop-off and on the other side is a bus drop-off drive.

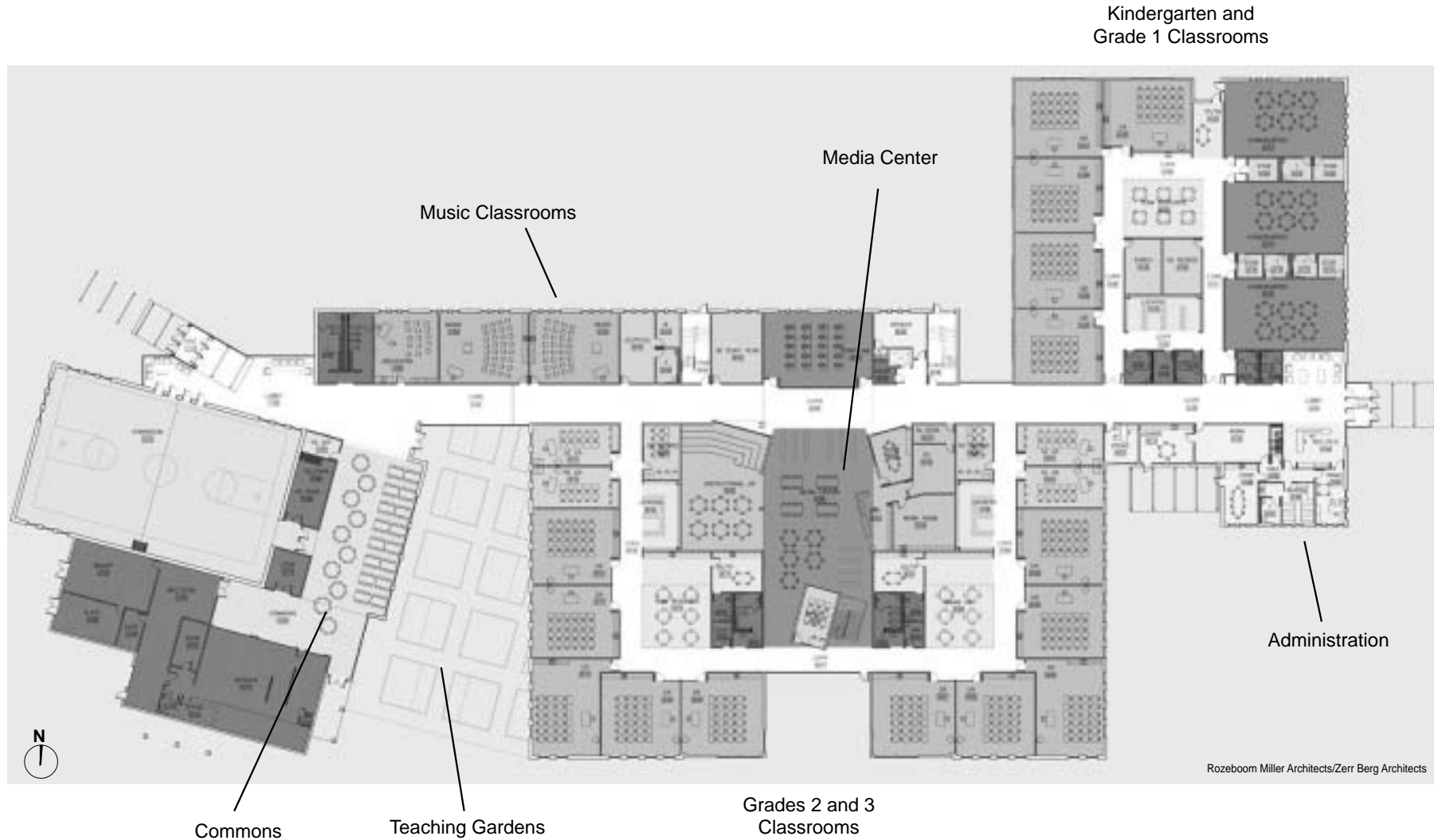


## Elementary school contains several learning communities



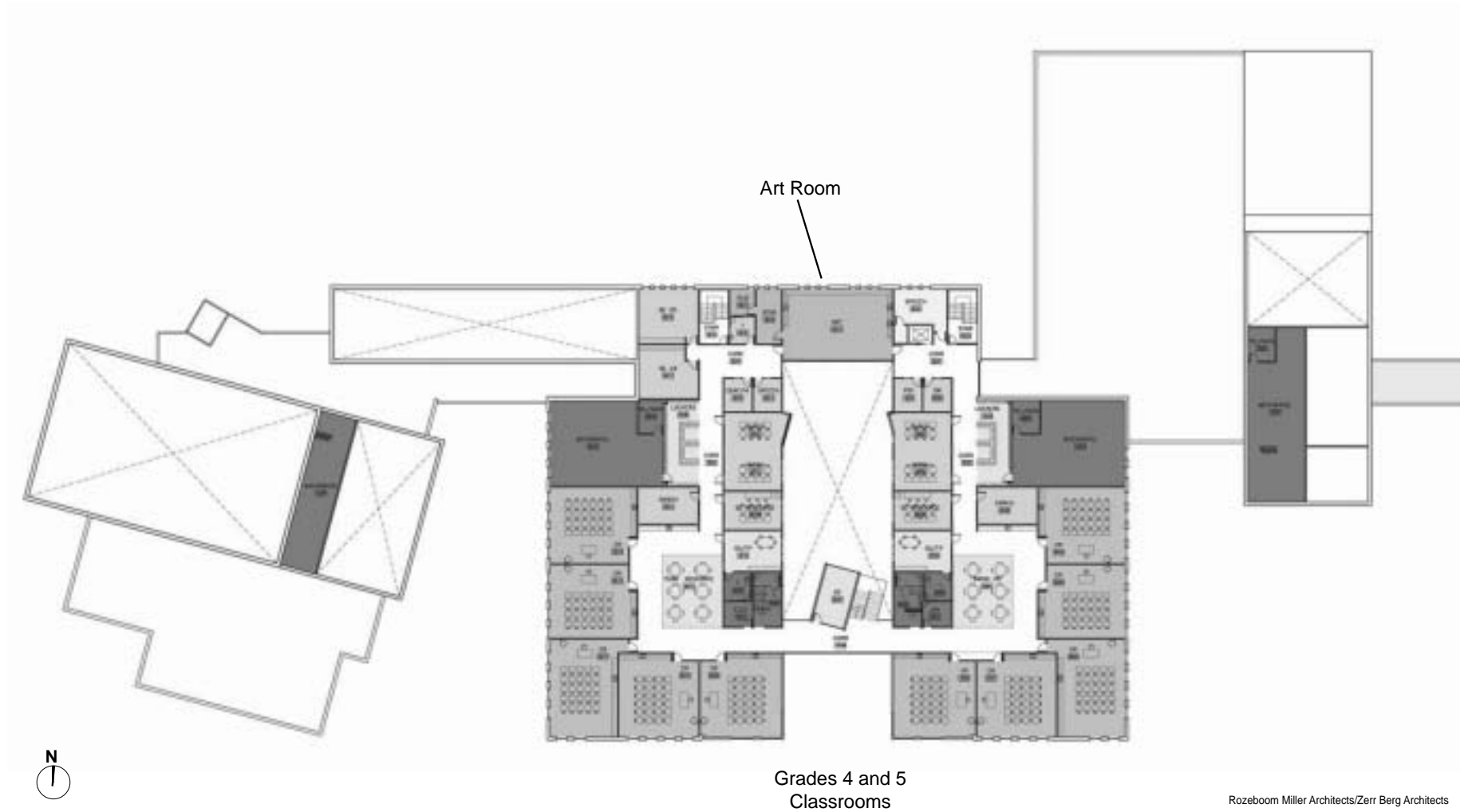


## New K-5 elementary school – First Floor





## New K-5 elementary school – Second Floor





## Educational enhancement and construction efforts continue

While the design teams are instrumental in the development of the plans for the new and renovated schools, the implementation and transition teams are addressing the educational programs and transition issues related to the construction projects.

### High School Enhancement Implementation Team

Educational enhancement efforts at Moorhead High School include the continued expansion and development of

small learning communities and the ninth grade house concept. Study groups have formed to further research the academy concept.

### Middle School Model Implementation Team

A major undertaking of the Middle School Model Implementation Team was the creation of a professional development opportunity for grades 6-8 teachers. The professional development model was developed in

collaboration with Minnesota State University-Moorhead.

The mission statement for the new middle school was developed by the staff members and parents on the implementation team. The mission is to provide a safe and supportive learning environment that meets the unique academic, social, emotional and physical needs of young adolescents.

### Elementary Education Transition Team

The elementary transition team is working to determine criteria to assist the district in teacher placements at the three elementary schools. While no decisions have been made on either principal or teacher placement, the district will work to ensure that all decisions will be made to best serve the interests of the students.



Kevin Kopperud, principal at Thomas Edison Elementary School and chair of the Elementary Transition Team, leads a meeting of the team after school in the Edison library.



Members of the Elementary Transition Team brainstorm ideas regarding a process for determining teacher placement at the three elementary schools.

### Design Teams

Architects have been working with members of the design teams as well as teachers and staff from individual departments and grade levels to determine rooms arrangements, including cabinets, shelving, marker and tack boards, and other furnishings necessary in each of the rooms. These details are incorporated into the Design Development phase of the construction projects and are important when determining final budgets for the projects.

### Other Highlights

Building and district administration are working with the construction management company to schedule asbestos removal in some of the schools over spring break in March.

This winter, the Adult Basic Education and Indian Education programs will move to space at Townsite Centre to allow for asbestos removal at the Voyager complex.





**Right:** Teachers from the Elementary Design Team meet with architects to discuss the furnishing arrangements within the grades 1-5 classrooms at the Robert Asp and Junior High sites.



## Overview of Educational Enhancements

- Reconfigure the district's grade structure from the current K-4/5, 5-6, 7-8, 9-12 design to a K-5, 6-8, 9-12 design to reduce the number of transitions for students and allow for comprehensive curriculum development
  - Implement the middle school model for grades 6-8 to support the needs of preadolescents
  - Create a ninth grade center,
- similar in concept to the middle school
- Create smaller learning communities at the elementary, middle and high school levels
  - Provide opportunities for interdepartmental learning at the middle school and high school levels
  - Provide equity in programs and services for K-5 students



**Above and right:** Robert Asp and Moorhead Junior High teachers and staff members on the Middle School Model Implementation Team meet after school. Team members will be recommending a process for teacher placement, schedules and other aspects of implementing the middle school model.





## Anticipated Project Schedule as of October 2002

### New middle school

- Pre-design and Schematic Design Phases complete
- Construction Start for Bid Package 1: October 7, 2002
- Completion of Design Development Phase: November 11, 2002
- Construction Documents Phase for Bid Package 2: November 11-21, 2002
- Bid/Award Phase for Bid Package 2: December 2002
- Construction Documents Phase for Bid Package 3: February 2003
- Bid/Award Phase for Bid Package 3: March 2003

### New elementary school

- Pre-design Phase complete
- Completion of Schematic Design: November 11, 2002
- Design Development Phase: November 11-December 16, 2002
- Construction Documents Phase for Bid Package 1: December 2002
- Bid/Award Phase for Bid Package 1: January 2003
- Construction Start for Bid Package 1: February 3, 2003
- Construction Documents Phase for Bid Package 2: January-February 2003
- Bid/Award Phase for Bid Package 2: February-March 2003
- Construction Documents Phase for Bid Package 3: December 2002-March 2003

- Bid/Award Phase for Bid Package 3: April 2003

### Moorhead High School remodeling/additions

- Pre-design and Schematic Design Phases complete
- Completion of Design Development Phase: November 25, 2002
- Construction Documents Phase for Bid Package 1: December 2002-January 2003
- Bid/Award Phase for Bid Package 1: February 2003
- Construction Start for Bid Package 1: April 1, 2003

### Robert Asp remodeling

- Pre-design and Schematic Design Phases complete
- Completion of Design Development Phase: January 13, 2003
- Construction Documents Phase for Bid Package 1: December 2002-January 2003
- Bid/Award Phase for Bid Package 1: February 2003
- Construction Start for Bid Package 1: April 21, 2003
- Construction Documents Phase for Bid Package 2: February-March 2003
- Bid/Award Phase for Bid Package 2: April 2003

### Phases of the Design Process

During *Schematic Design*, the design committees work with the architects to determine the size of spaces in the building and their relationship to each other. Once these details are determined, an initial cost estimate is done.

*Design Development* is the next phase when the design for the building is refined based on feedback from the design committees and the Facilities Overview Committee. Planning of the structural, mechanical and electrical systems is done, and the major building materials are selected. At the end of both Schematic Design and Design Development the designs are presented to the School Board.

*Construction Documents* involves creating the bid documents — the detailed plans and specifications — for the project. Before completing the bid documents, a final cost estimate is completed and a timeline for the work is developed.

During the *Bidding and Award Phases* the construction manager solicits bids for the work. Bids are then formally accepted by the Moorhead School Board.

### Junior High remodeling

- Pre-design and Schematic Design Phases complete
- Completion of Design Development Phase: January 13, 2003
- Construction Documents Phase for Bid Package 1: December 2002-January 2003
- Bid/Award Phase for Bid Package 1: February 2003
- Construction Start for Bid Package 1: April 21, 2003
- Construction Documents Phase for Bid Package 2: February-March 2003
- Bid/Award Phase for Bid Package 2: April 2003

### Probstfield remodeling

- Pre-design and Schematic Design Phases complete
- Completion of Design Development Phase: January 13, 2003
- Construction Documents Phase for Bid Package 1: December 2003-January 2004
- Bid/Award Phase for Bid Package 1: January-February 2004
- Construction Start for Bid Package 1: April 1, 2004