



Construction Update

Moorhead Area Public Schools • August 2002

Building a positive future!

The Moorhead School District is committed to providing our students with the tools and skills they need for the future. We take pride in the excellence that exists in our schools and in the many educational opportunities we offer children and adults in our community.



Dr. Larry P. Nybladh
Superintendent

As a district, we are challenged to continue building programs that meet the needs of all our learners.

Over the past two years, district employees, parents and community members worked together to create a vision for the future of the school district to ensure the continued success of our students and excellence of our schools. This vision will bring enhancements to our educational programs and renovations to our facilities.

This year, district employees will work together to build programs at the elementary, middle and high school levels that will provide the foundation for learning in our new and completely renovated schools.

As part of these efforts, you will

begin to see the results of the successful bond referendum:

- Design will continue for the new elementary school and the new middle school.
- Plans will be completed for the renovation of the other school district facilities.
- Implementation teams and transition teams will work to implement educational enhancements such as the middle school model and smaller learning communities.

The 2002-03 school year will be one of building for the Moorhead School District. We will begin building and remodeling schools, we will be building improved educational programs, and we will continue building relationships with people and businesses throughout our community.

Together, we will build a strong partnership to support the success of all learners in our school district.

Sincerely,

Dr. Larry P. Nybladh
Superintendent of Schools

Teams provide input to facilities planning and enhancement process

Recommendations made by five community task forces led to the comprehensive plans for the future of the Moorhead School District. Now design teams, implementation teams and transition teams are leading the efforts to implement these plans.

“Involvement of many individuals has been a critical aspect of both the facilities planning process and the educational enhancement implementation efforts,” said Dr. Larry P. Nybladh, superintendent.

The 18-month decision-making process that eventually led to the passage of the bond referendum has continued with the formation of design committees, a Facilities Overview Committee, and several implementation and transition teams.

The four design committees are responsible for working with the architects to determine the design philosophy for each building. Work done by the design committees and architects is reviewed by the Facilities Overview Committee and approved by the School Board prior to the completion of each design phase.

The implementation and transition teams will address the educational

programs that will be provided within these new facilities. The middle school model implementation team, the high school enhancement implementation team, the alternative education enhancement implementation team and the elementary education transition team will be meeting regularly during the school year.

These teams are responsible for determining the issues that need to be addressed as the planning for the enhancements continues and establishing timelines to reach the goals. They will also be serving as liaisons to communicate with their colleagues about the efforts.

On the Inside

Elementary Schools	Pages 2-5
Educational Enhancements	Page 6
Middle School	Pages 7-9
High School	Pages 10-13
District Education Center	Pages 14-15
Planning Process and Construction Schedule	Page 16



Junior High to become K-5 elementary school

Moorhead Junior High and Robert Asp School will both be converted to K-5 elementary schools.

The new elementary school is still in the schematic design phase. The

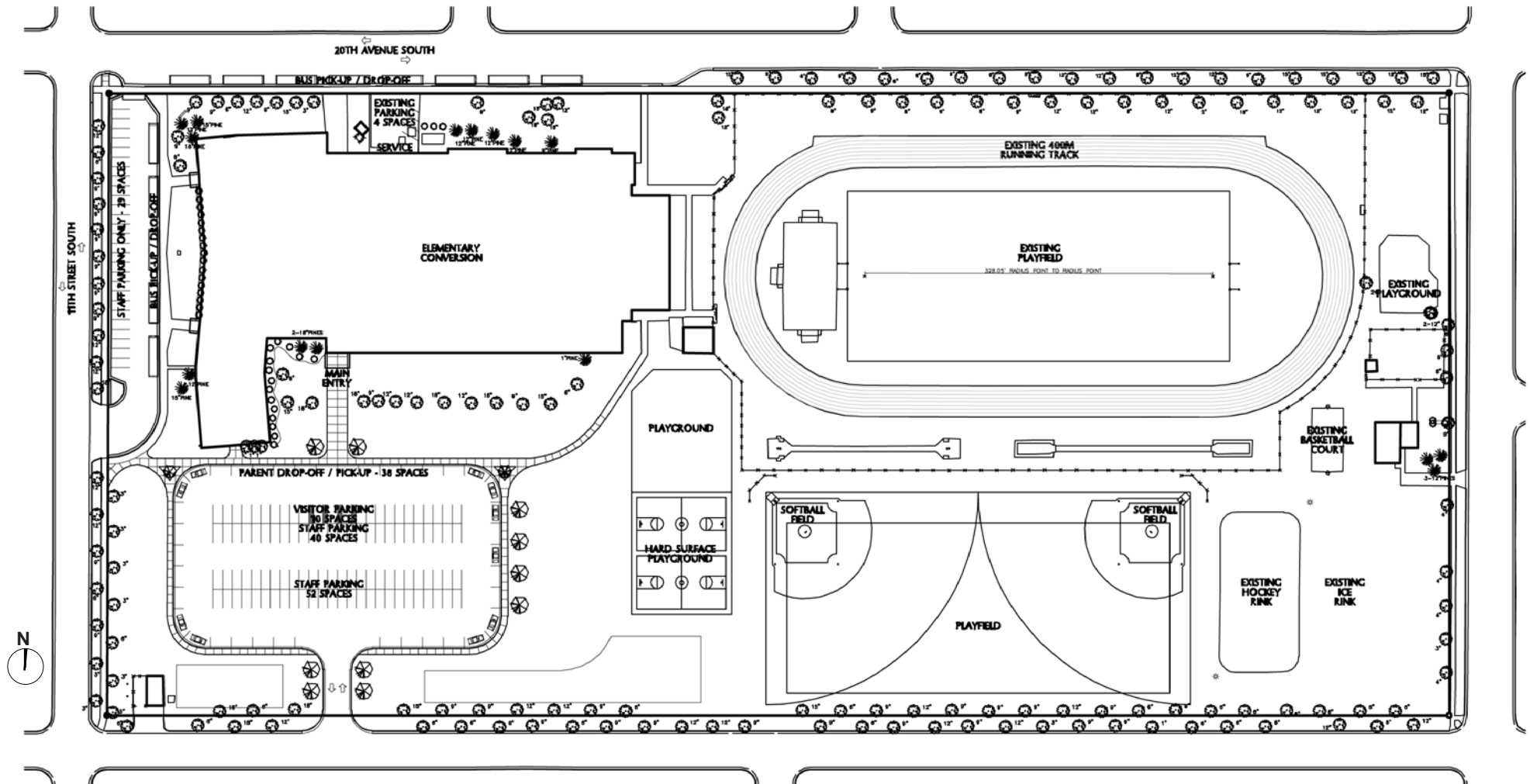
elementary design committee met with architects in August to review several design options for the new elementary school. Another meeting is planned for September to further discuss design

needs for the school.

Changes to the Junior High site include the addition of a large visitor and staff parking lot to reduce the need for street parking. Space is also

provided for parent drop-off and pick-up areas.

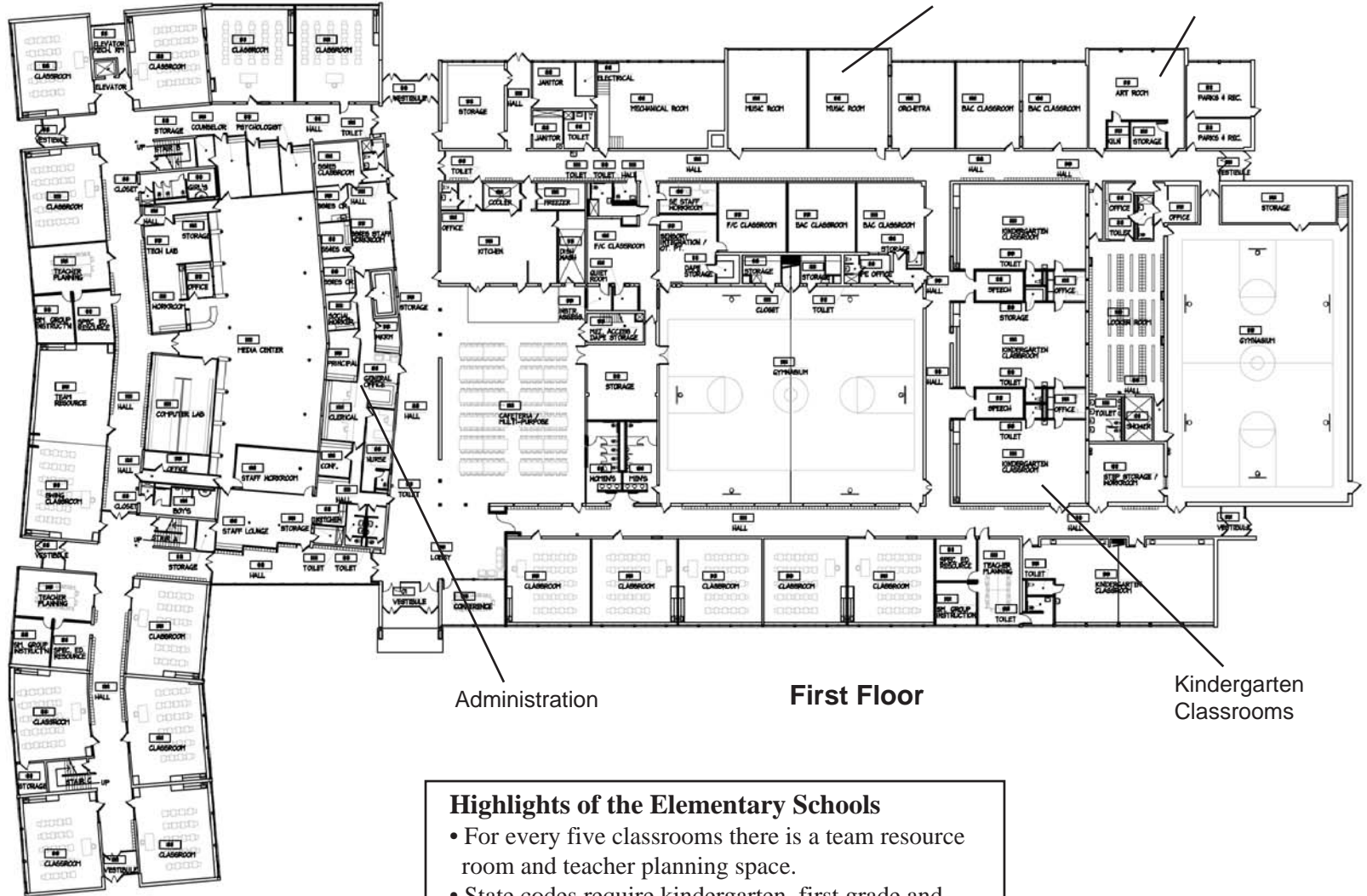
The existing running track will be retained and a playground will be added.



Junior High conversion to elementary school



Second Floor



Administration

First Floor

Kindergarten Classrooms

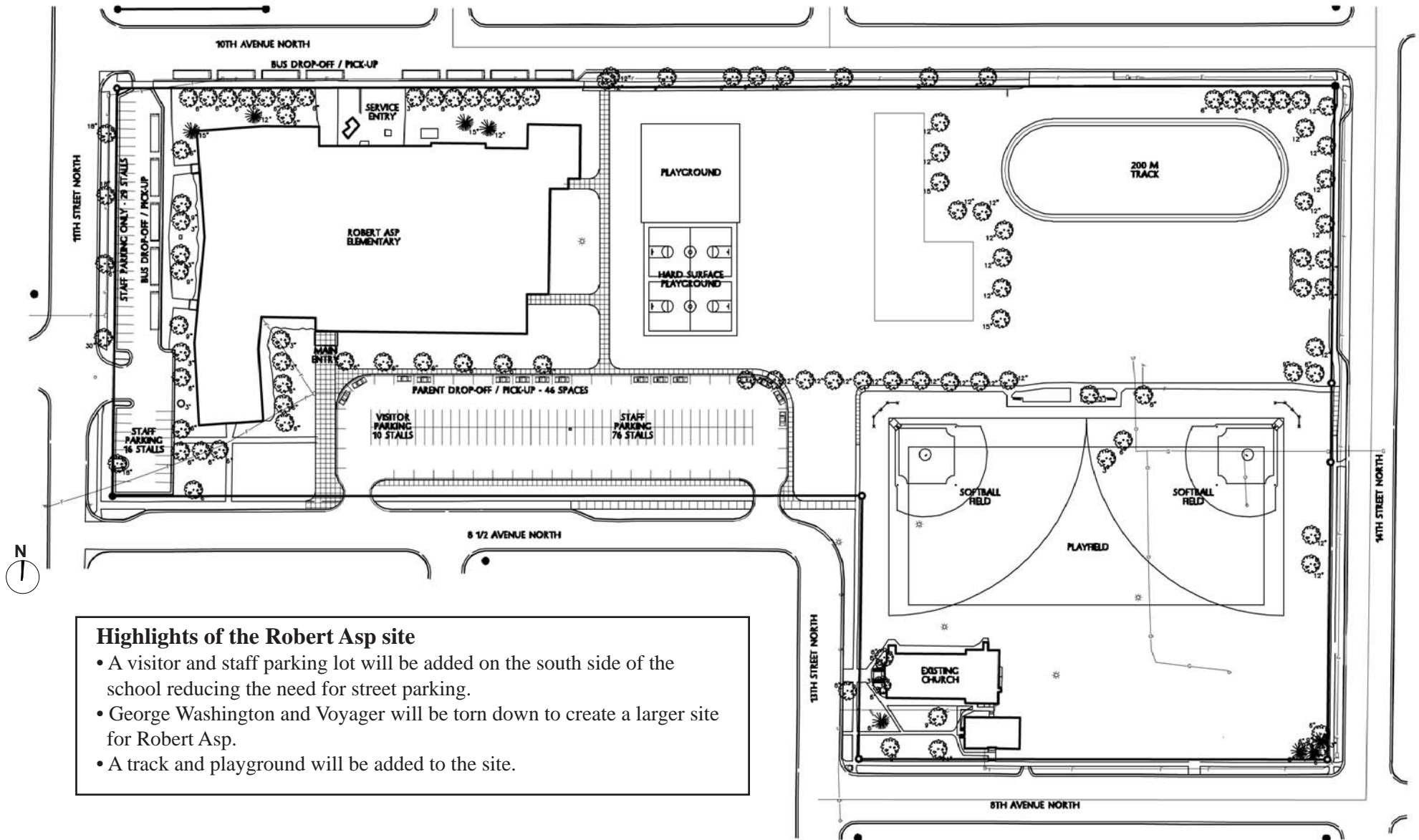
Music Classrooms

Art Room

Highlights of the Elementary Schools

- For every five classrooms there is a team resource room and teacher planning space.
- State codes require kindergarten, first grade and second grade classrooms to be on the first floor.

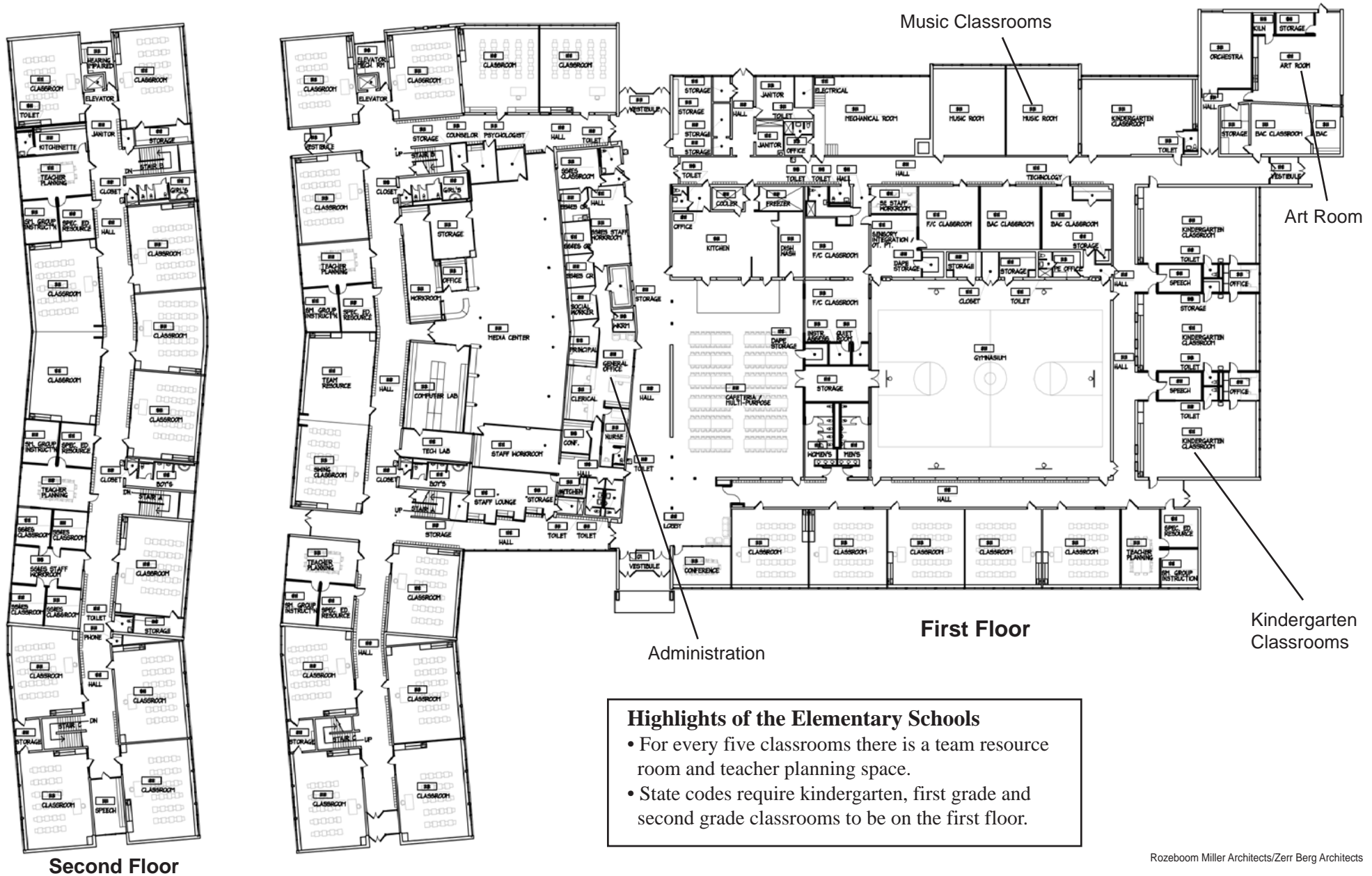
Robert Asp to become K-5 elementary school



Highlights of the Robert Asp site

- A visitor and staff parking lot will be added on the south side of the school reducing the need for street parking.
- George Washington and Voyager will be torn down to create a larger site for Robert Asp.
- A track and playground will be added to the site.

Robert Asp conversion to elementary school



Highlights of the Elementary Schools

- For every five classrooms there is a team resource room and teacher planning space.
- State codes require kindergarten, first grade and second grade classrooms to be on the first floor.



Vision for the future enhances education for all learners

In the next two years, numerous educational enhancements will be implemented to further improve the quality education provided by the Moorhead Area Public Schools. Several implementation and transition teams are meeting to plan for these enhancements.

Elementary Education Transition Team

Elementary transition team members will meet regularly this school year. During the next two years, the transition team will focus on the programs and services offered in each school. Team members will also be addressing curriculum, redistribution of furniture and equipment, boundaries, and parent involvement.

Middle School Model Implementation Team

Members of the middle school implementation team have established a timeline for their efforts to implement the middle school model at the new middle school when it opens in the fall of 2004.

During the fall of 2002, the team will define the broad philosophy of the middle school and develop the mission statement.

In the spring, the team plans to study preadolescent and adolescent development, determine curricular options and

work to begin developing the school schedule.

By the spring of 2004, the team will have discussed curriculum, advisory programs, middle school teams, transition issues, and program assessment.

Alternative Education Enhancement Team

The alternative education enhancement team is working with high school and middle school representatives to develop “school within a school” approaches.

This will help reduce the placement of students at the off-site program. At the high school, it will simplify students’ movement between high school offerings and the alternative classes offered through the Red River Area Learning Center.

The alternative education efforts also include further implementation of independent study options.

High School Enhancement Implementation Team

The high school enhancement implementation team has several enhancements already under development.

Last year a team of special education and regular education teachers teamed to form a small learning community of

ninth grade students. This incorporated multidisciplinary approaches to learning. These initial efforts were considered successful, and the approach will be further implemented for all ninth grade students with the construction of a ninth grade center planned for the high school.

A movement toward a divisional organizational structure will develop better communication, coordination and integrated instructional approaches at the high school. New construction has been designed to facilitate the pairing of math and science, English and social studies, the arts, and vocational areas.

The development of academies is underway for upperclassmen. One of the key features of academies will be the development of the core curriculum in the context of areas of student interest. For example, in an arts academy the principles of science or history might be taught in the context of art, theater or music.

The work to develop academies will look at the creation of the small learning community within the high school and the course offerings necessary to support the goals of the academy.

Also being discussed is an effort toward flexible scheduling options.

Overview of Educational Enhancements

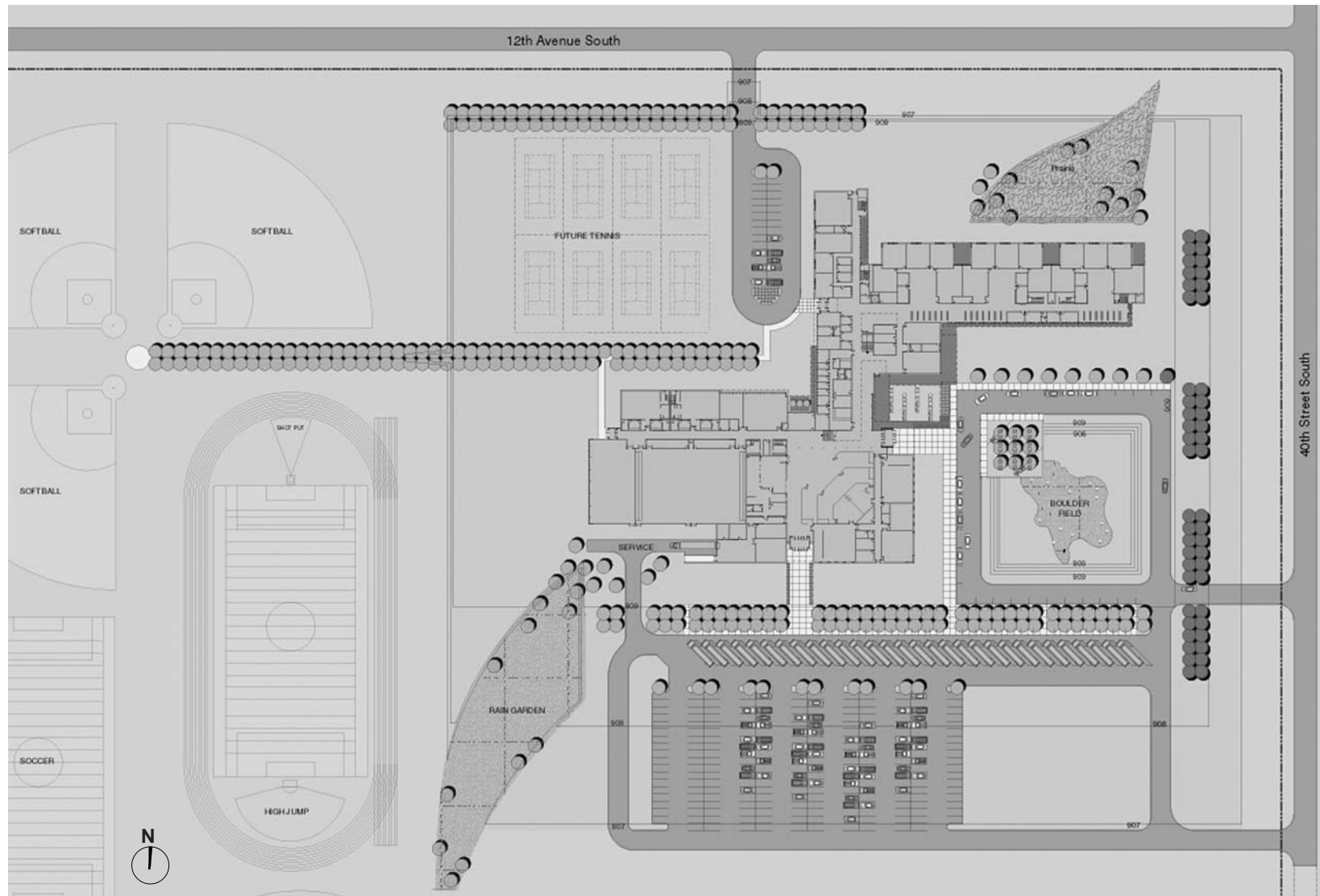
- Reconfigure the district’s grade structure from the current K-4/5, 5-6, 7-8, 9-12 design to a K-5, 6-8, 9-12 design to reduce the number of transitions for students and allows for comprehensive curriculum development
- Implement the middle school model for grades 6-8 to support the needs of preadolescents
- Create a ninth grade center, similar in concept to the middle school
- Create smaller learning communities at the elementary, middle and high school levels
- Provide opportunities for interdepartmental learning at the middle school and high school levels
- Provide equity in programs and services for K-5 students

Middle school schematic design completed

Schematic design for the Moorhead School District's new middle school has been completed. Work is continuing on the next phases: design development and construction documents.

During the design development phase further details of the spaces will be determined. The construction documents phase involves preparing the documents for bid openings on the projects. The first bid package for site work and footings and foundations of the new school will be ready this fall.

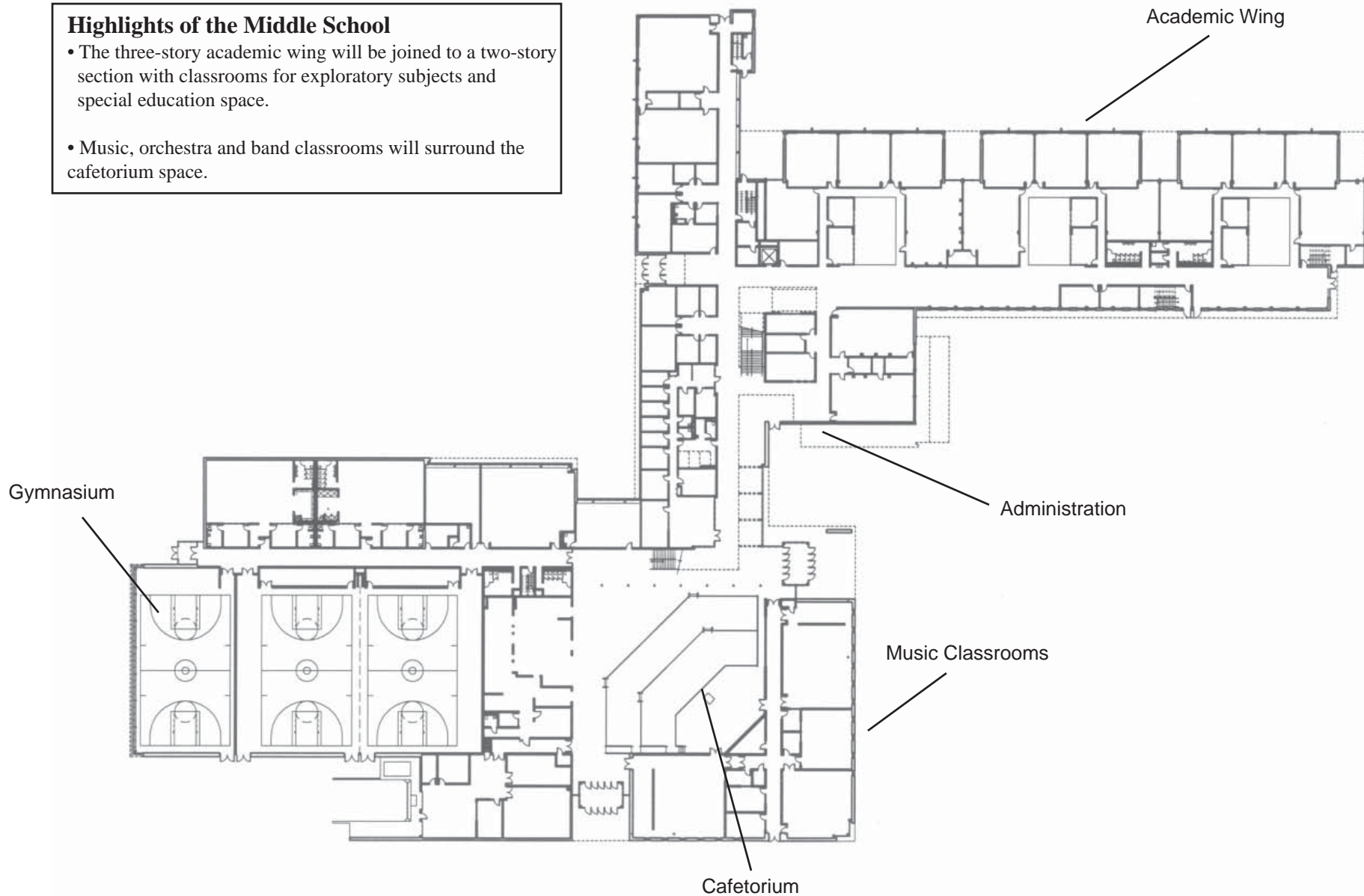
The new middle school, which will serve students in grades 6-8, will be 230,000 square feet. The school will be located in the northeast quadrant of land the school district owns at 40th Street and 12th Avenue South.



Middle School – First Floor

Highlights of the Middle School

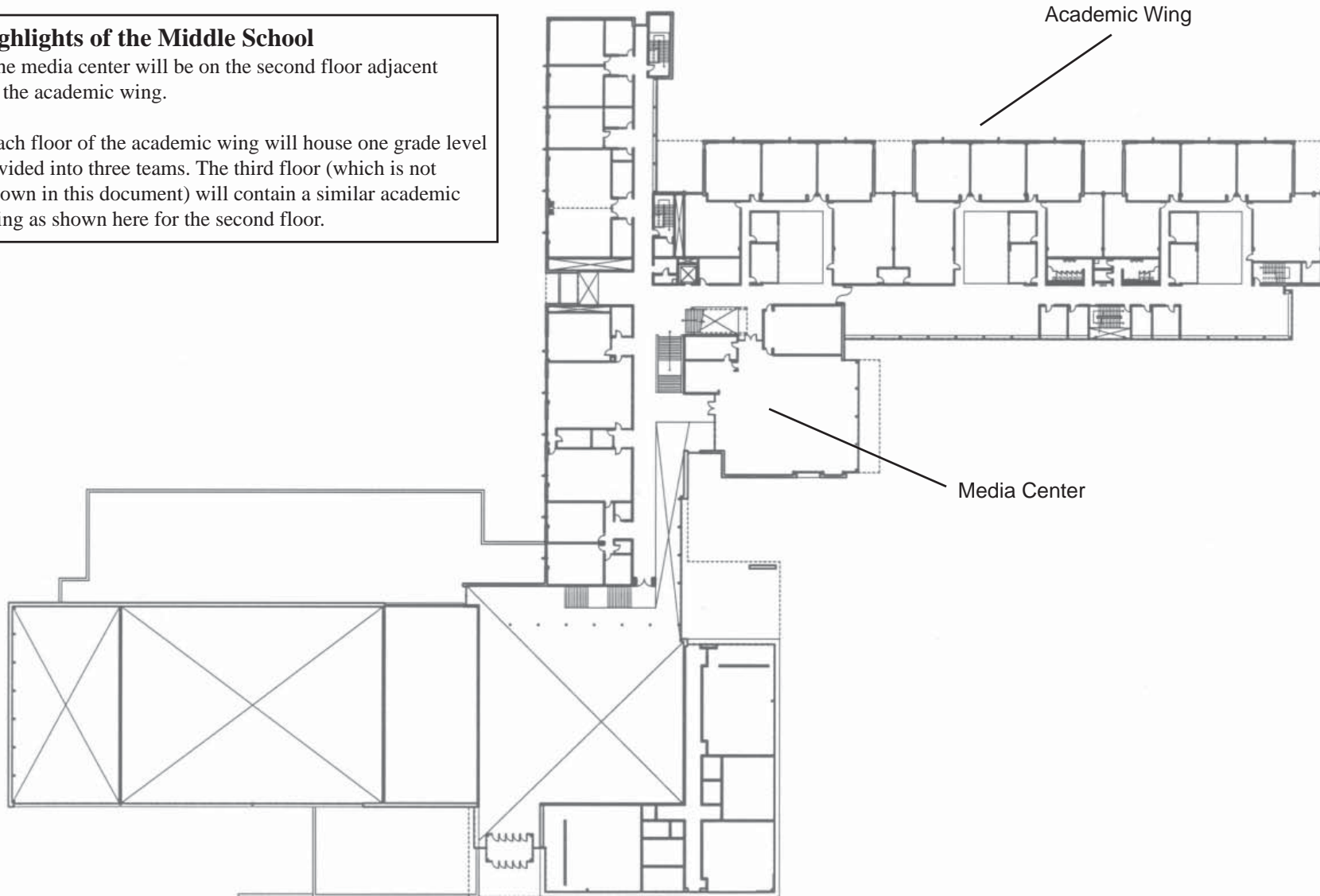
- The three-story academic wing will be joined to a two-story section with classrooms for exploratory subjects and special education space.
- Music, orchestra and band classrooms will surround the cafetorium space.



Middle School – Second Floor

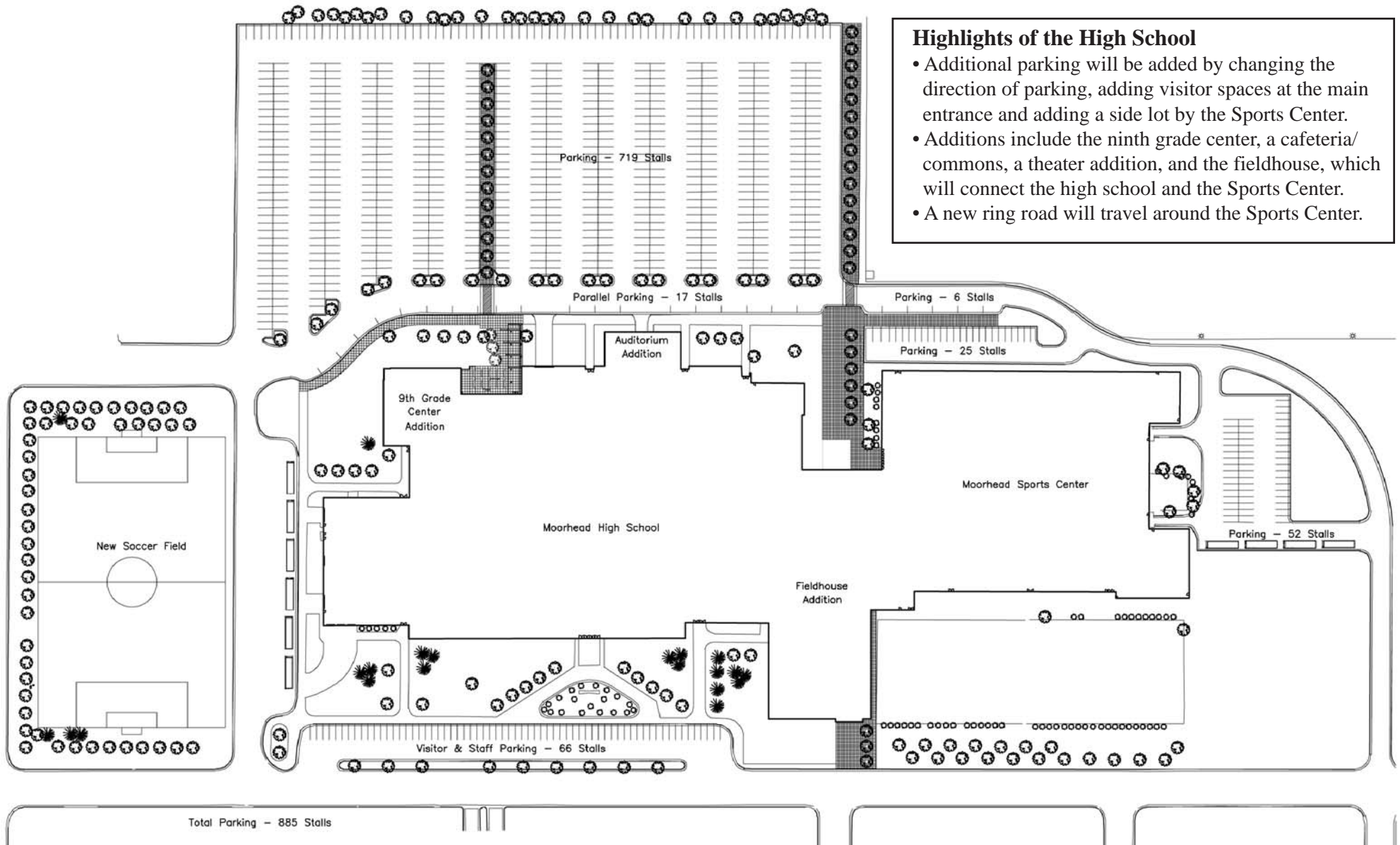
Highlights of the Middle School

- The media center will be on the second floor adjacent to the academic wing.
- Each floor of the academic wing will house one grade level divided into three teams. The third floor (which is not shown in this document) will contain a similar academic wing as shown here for the second floor.





Ninth grade center key component of high school



Highlights of the High School

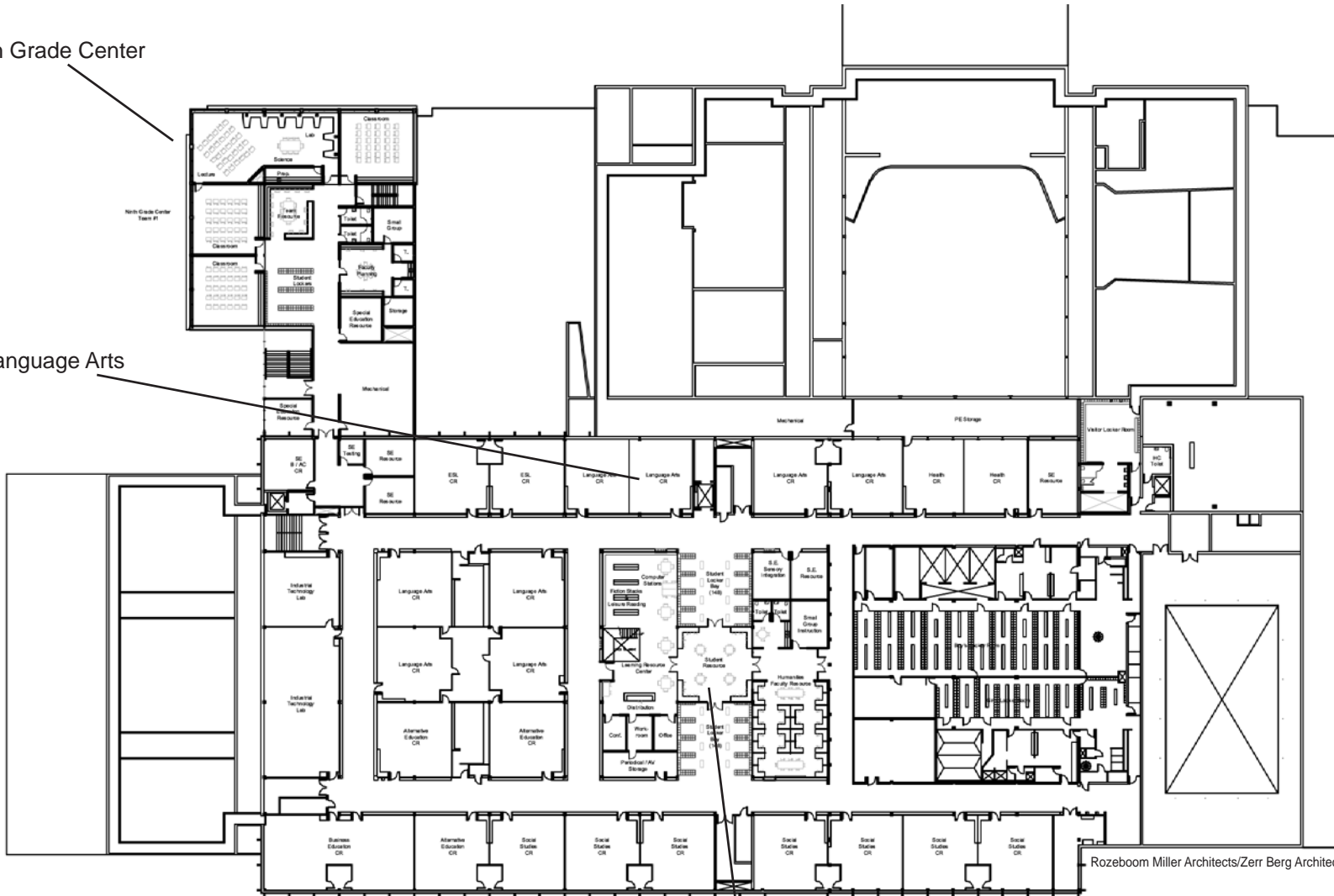
- Additional parking will be added by changing the direction of parking, adding visitor spaces at the main entrance and adding a side lot by the Sports Center.
- Additions include the ninth grade center, a cafeteria/commons, a theater addition, and the fieldhouse, which will connect the high school and the Sports Center.
- A new ring road will travel around the Sports Center.



High School – First Floor

Ninth Grade Center

Language Arts



Business Education

Alternative Education

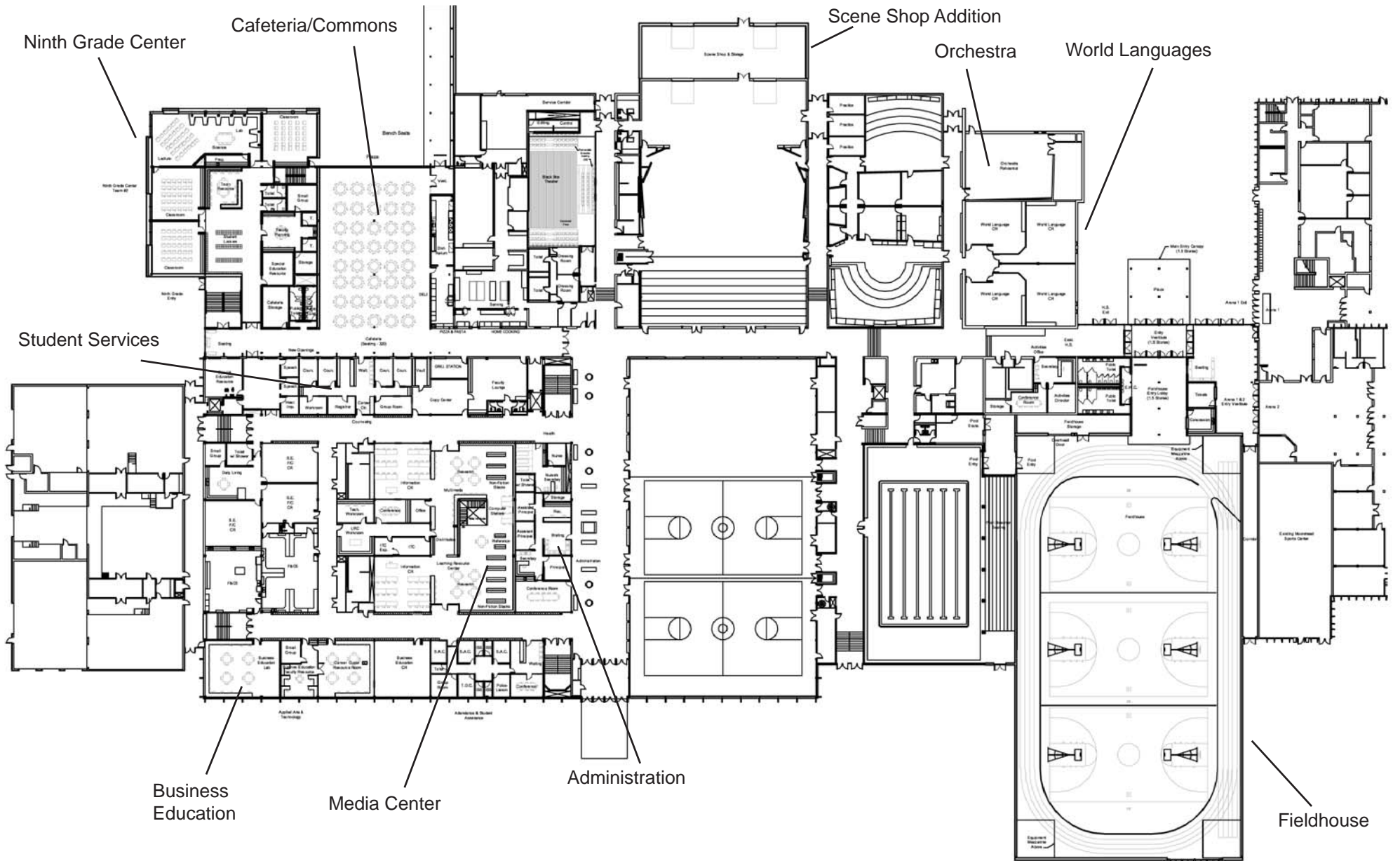
Humanities Resource Center
(connected to media center above)

Social Studies

Rozeboom Miller Architects/Zerr Berg Architects

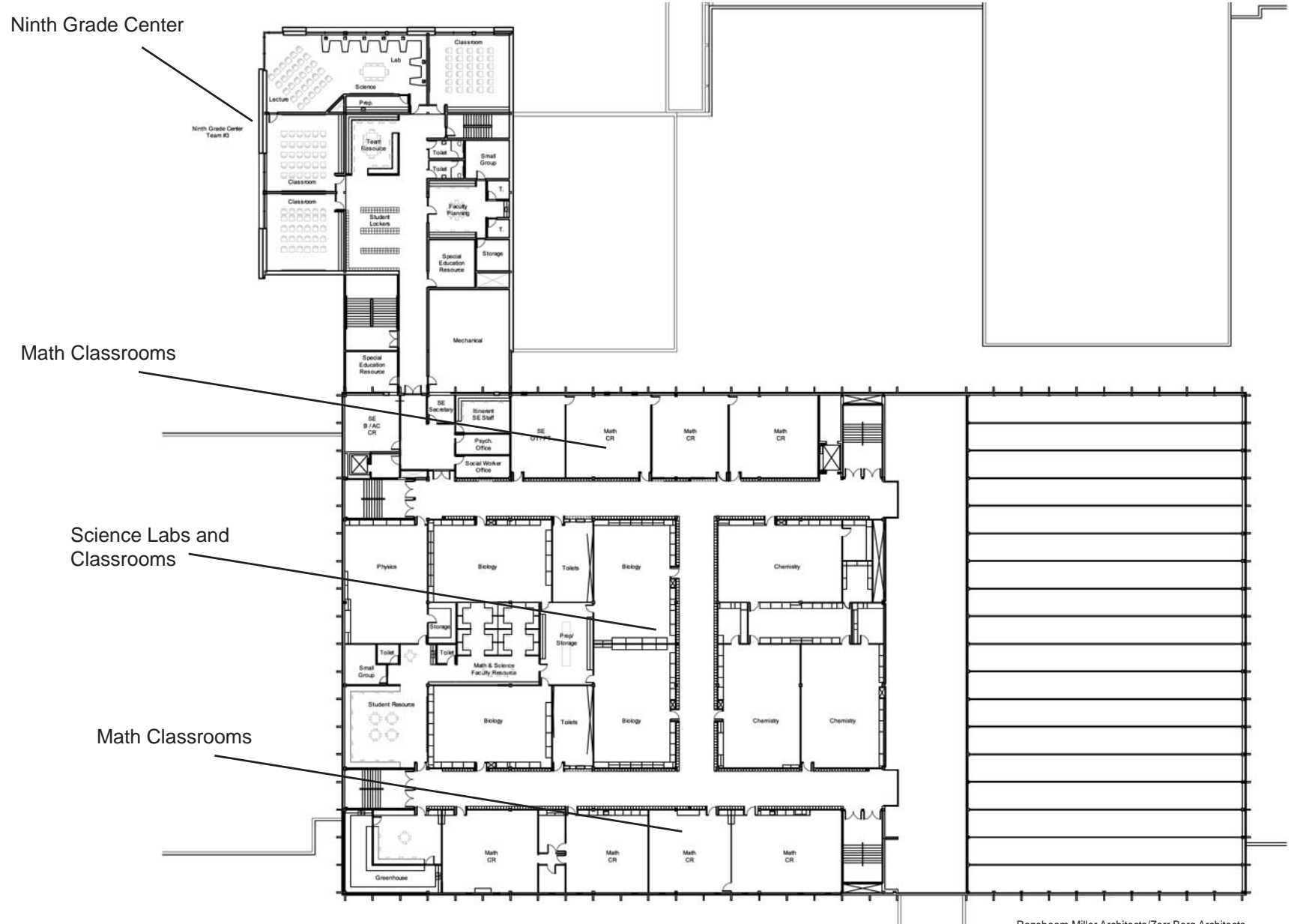


High School – Second Floor





High School – Third Floor



Ninth Grade Center

Ninth Grade Center Team #3

Math Classrooms

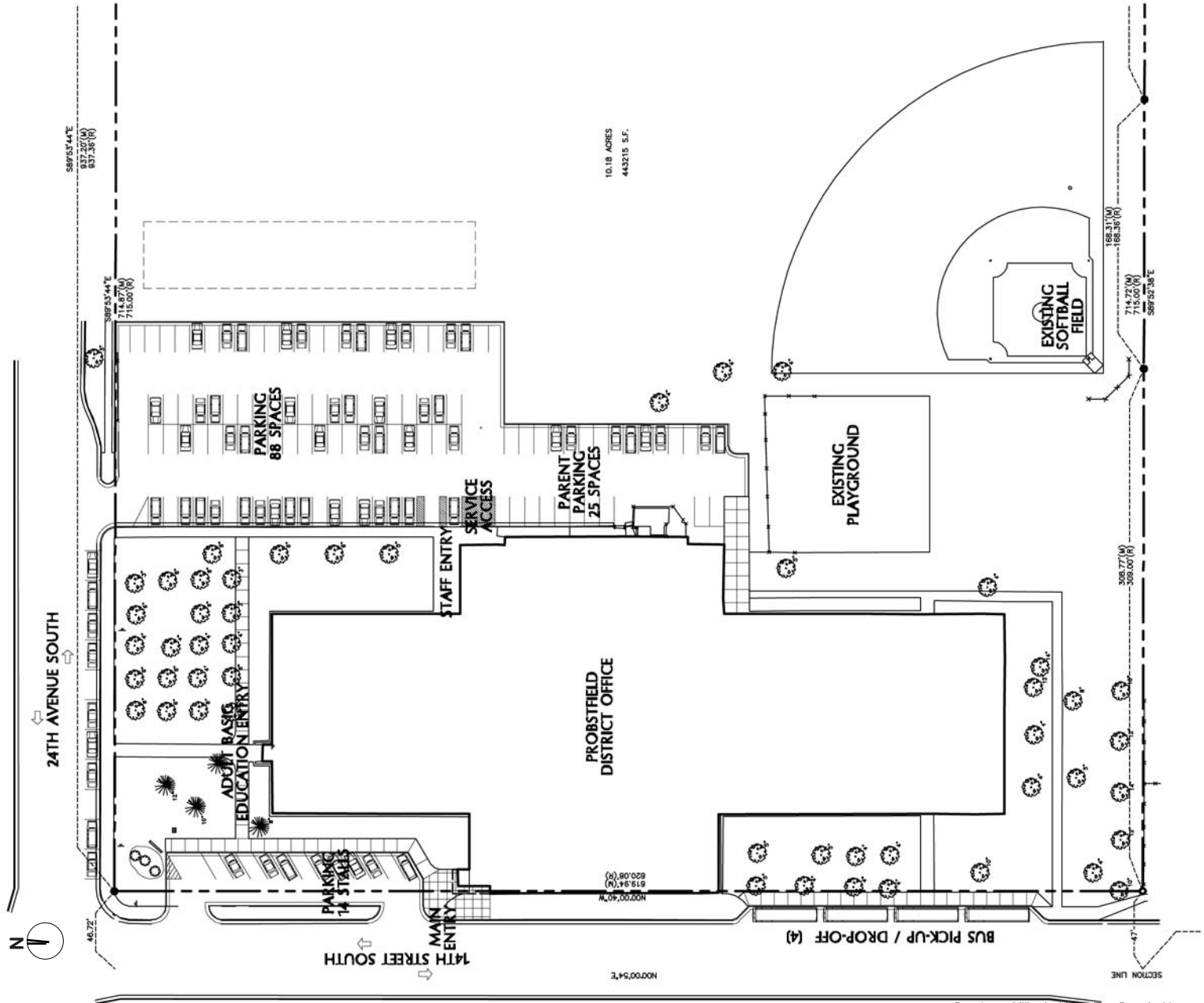
Science Labs and Classrooms

Math Classrooms

Probstfield to become district education center

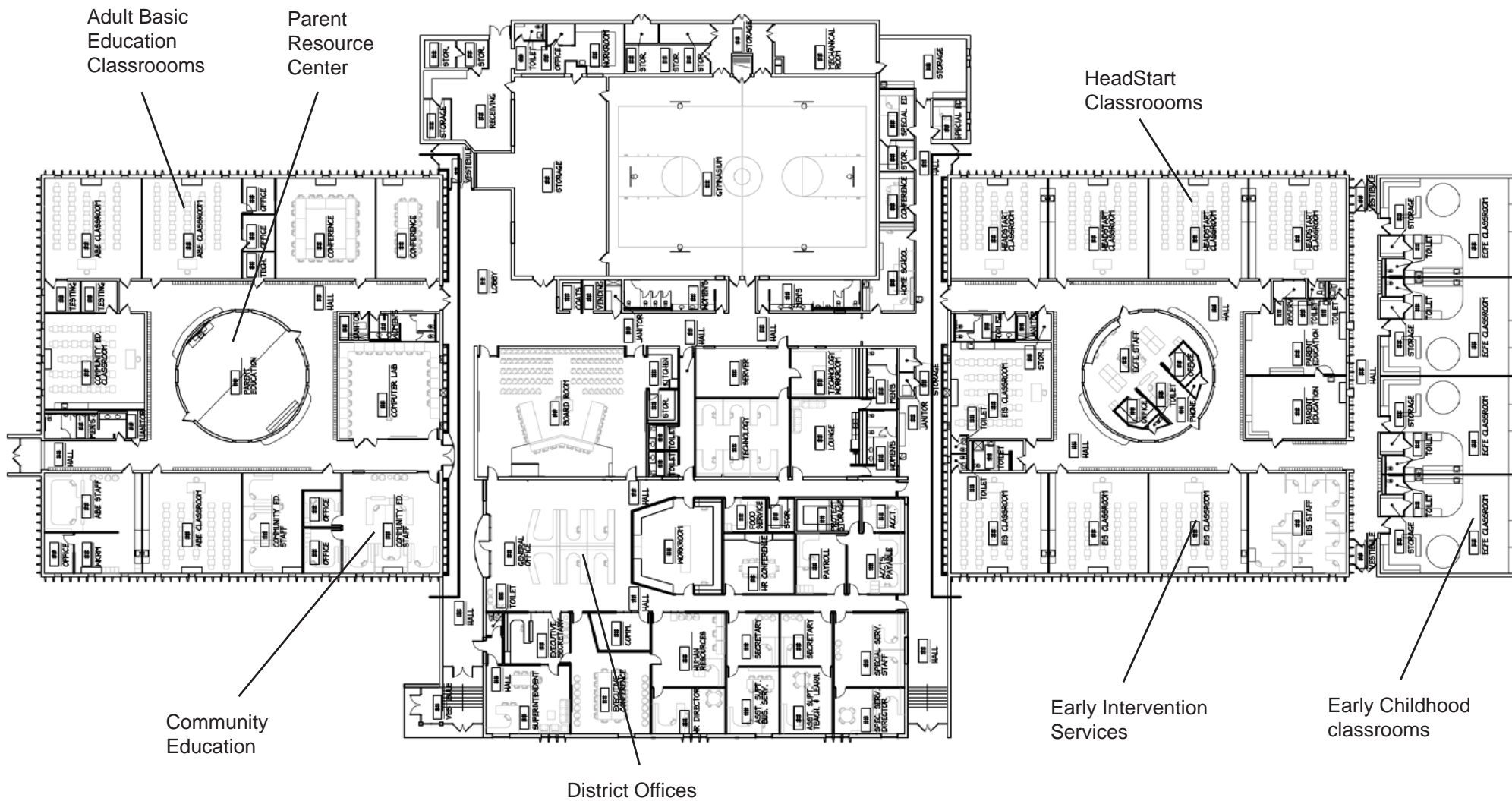
Highlights of the District Education Center

- The district education center will house Early Childhood Family Education, Early Intervention Services, HeadStart, Adult Basic Education, Community Education, and district offices.
- Additional parking spaces will be added to the site.
- The current playground will be retained for use with the early childhood programs.





District Education Center





Process leads to current projects

For eighteen months, significant effort was expended to address the challenges facing the Moorhead Area Public Schools. Major challenges include continued student enrollment decline, rising operational costs, inadequate state and federal funding, educational reform and enhancement, and an aging infrastructure.

The district's efforts in developing a long-range, comprehensive plan for addressing these challenges began in August 2000 when Dr. Larry P. Nybladh, Superintendent of Schools, outlined five future-focused initiatives for the district.

One of those initiatives included conducting an organizational study of the school district. Dr. Roger Worner, educational systems consultant, completed the organizational study in February 2001.

As a response to the Organizational Study Report prepared by Dr. Worner, Superintendent Nybladh developed a "Recommendation for a Decision-Making Process." The decision-making process included eight Primary Focus Areas. Those areas were addressed by administrative reports, research study groups and community task forces.

Community task forces provide vision

Between September and December 2001, five community task forces addressed five of the Primary Focus Areas in the decision-making process —

Student Demographics, Middle School Model, High School Enhancement, Facility and Grade Level Configuration Model and Alternative Education Delivery Model.

In December, the five community task forces completed their work and presented recommendations to the Superintendent of Schools and the Moorhead School Board. The recommendations of these five task forces are responsive to the changing needs of our students and our district. Recommendations will continue to be addressed by implementation teams that have been formed.

Vision for schools takes shape

On March 12, 2002, Moorhead School District voters approved a \$64 million bond referendum to support improvements to school district facilities.

Since the passage of the referendum, four design committees have been meeting to discuss design needs of the high school, middle school, three elementary schools and district education center. Work done by those committees is reviewed by the Facilities Overview Committee before going to the School Board for approval.

Updates on the construction and educational enhancement implementation efforts will be available on the district's Web site at www.moorhead.k12.mn.us as work progresses.

Anticipated Project Schedule

New middle school

- Pre-design and Schematic Design Phases complete
- Design Development Phase: July 1-September 30, 2002
- Construction Documents Phase: October 1, 2002-January 31, 2003
- Bidding and Construction Phase: September 1, 2002-June 2004 (site work and foundation work will begin this fall)

New elementary school

- Pre-design Phase completed
- Schematic Design: July 1-August 30, 2002
- Design Development Phase: September 1-November 2002
- Construction Documents Phase: November 1, 2002-February 28, 2003
- Bidding and Construction Phase: March 2003-May 2004

High School remodeling/additions

- Pre-design and Schematic Design Phases complete
- Design Development Phase: July 1-September 30, 2002
- Construction Documents Phase: September-December 2002
- Bid/Award Phase: January 2003
- Construction Phase: May 2003-August 2004

Robert Asp remodeling

- Pre-design and Schematic Design Phases complete
- Design Development Phase: November 1-December 31, 2002
- Construction Documents Phase: January 1-March 31, 2003
- Bid/Award Phase: April 2003
- Construction Phase: June 2003-August 2004

Junior High remodeling

- Pre-design and Schematic Design Phases complete
- Design Development Phase: November 1-December 31, 2002
- Construction Documents Phase: January 1-March 31, 2003
- Bid/Award Phase: April 2003
- Construction Phase: June 2003-August 2004

Probstfield remodeling

- Pre-design and Schematic Design Phases complete
- Design Development Phase: April-May 2003
- Construction Documents Phase: June-July 2003
- Bid/Award Phase: July 2003
- Construction Phase: June-September 2004