



# Shaping our Future for Growth and Learning

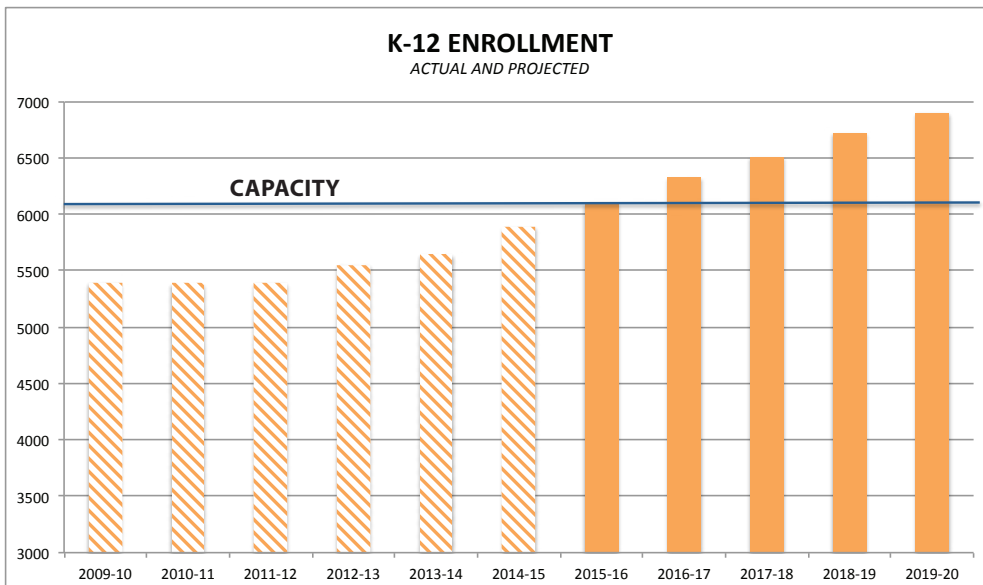
## Election Day: November 3, 2015

*Moorhead is a growing community, and our K–8 schools are over capacity.*

- Our community and the school district have been growing steadily since 2005 and that growth is projected to continue.
- In the decade from 2009 to 2019, total K-12 enrollment is projected to grow by nearly 1,200 students.
- In the past five years, nearly 1,300 housing units have been constructed in Moorhead.
- Enrollment growth and all-day kindergarten have increased classroom sections, creating a shortage of K-5 classroom space, impacting support program space, and eliminating flexible learning space. Since 2009, K-5 classroom sections have increased by 27 sections – from 95 to 122 for 2015-16.

*Our students deserve safe, inviting and inclusive learning environments that include:*

- Secure entrances at all K-12 schools,
- Additional classroom space for our growing K–8 student enrollment,
- Learning spaces for active learning, group activities and projects,
- Buildings designed for age-appropriate learning experiences, and
- Performing arts space for both student and community use.



To accommodate this growth and provide our students with the 21st century learning experiences they need to succeed, we engaged in an extensive *community-driven facilities planning process* for the first time in 14 years.

The facilities task force process created a 10-year Facilities Master Plan for the district to address current and future needs. This plan led to the Nov. 3 bond referendum to invest \$78.2 million in renovation of existing schools and construction of new space.

**SEE OTHER SIDE FOR MORE DETAILS**

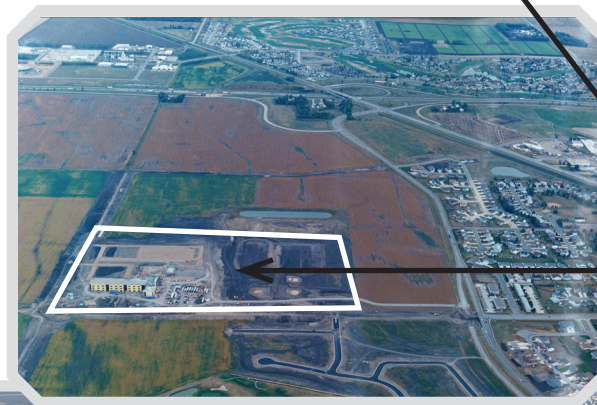
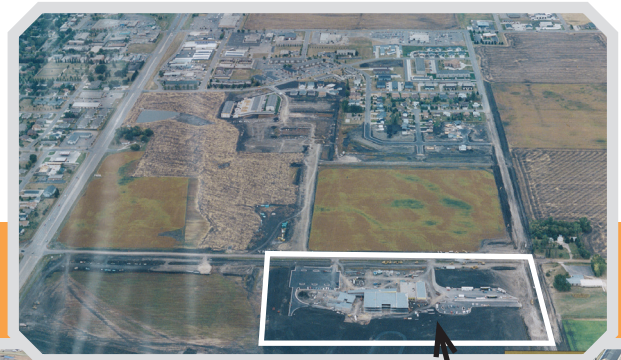
**Learn more: [www.moorheadschoos.org/referendum](http://www.moorheadschoos.org/referendum)**

# Shaping our Future for Growth and Learning

Election Day: November 3, 2015

If the Nov. 3 referendum is approved, the \$78.2 million bond would provide for growth and learning by:

- Adding secure entries in all school buildings;
- Creating adequate and appropriate learning environments for students from early childhood through grade 8;
- Building a K-4 elementary;
- Building a grades 5-6 school connected to Horizon Middle School to create a shared grades 5-8 campus reducing transitions for students;
- Building an auditorium for school and community use at Horizon Middle School; and
- Returning Probstfield Center for Education to an early childhood and district education center focused on the needs of our youngest learners.



Top: S.G. Reinertsen Elementary, 2004  
■ S.G. Reinertsen Elementary, 2015

Left: Horizon Middle School, 2004  
■ Horizon Middle School, 2015

- If voters approve the school funding request, taxes would increase on the average-priced home (\$150,000) by approximately \$9 per month.
- If voters do not approve the school funding request, class sizes would increase due to continued growth and crowding with less space dedicated for art, music and early childhood programs.

**Learn more: [www.moorheadschools.org/referendum](http://www.moorheadschools.org/referendum)**

*Prepared and paid for by Independent School District 152, Moorhead Area Public Schools, 2410 14th St. S., Moorhead, MN 56560.*