

*Honoring the Past* & **Shaping the Future**

---



**MOORHEAD**  
AREA PUBLIC SCHOOLS

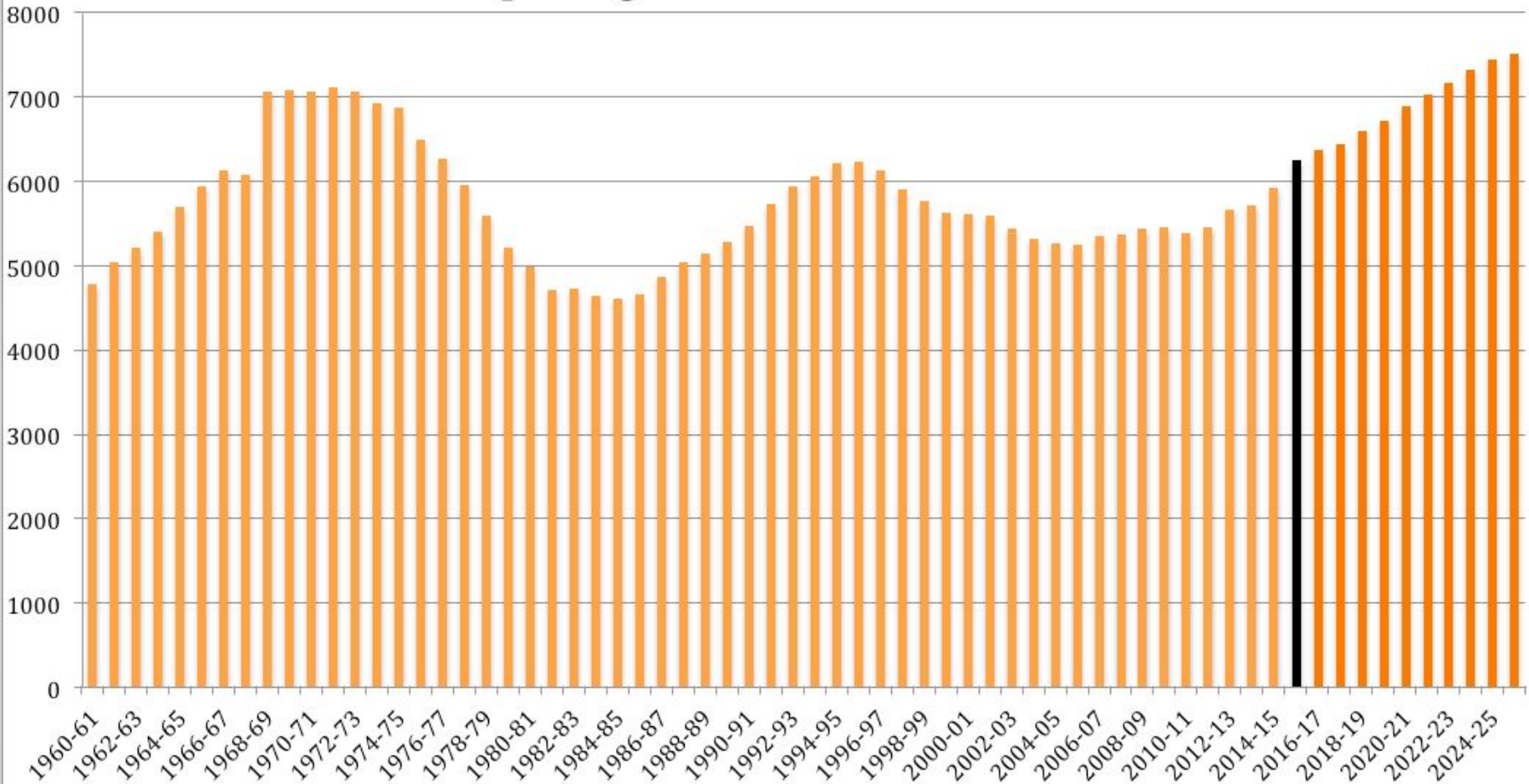
*Vote November 3, 2015*

# Facility Vision Statement

“We envision safe, inviting, and inclusive learning environments that support a sustainable culture of excellence in 21st Century Learning, while fostering meaningful and collaborative community partnerships.”

*Developed by Master Facility Plan Task Force (2014-2015)*

# Opening Enrollment 1960-2025



# **Moorhead is a growing community, and our K-8 schools are over capacity.**

- In the past five years, nearly 1,300 housing units have been constructed in Moorhead.
- Enrollment growth and all-day kindergarten have created a shortage of K-5 classroom space, impacted support program space, and eliminated flexible learning spaces.

# Safe, Inviting and Inclusive Learning Environments

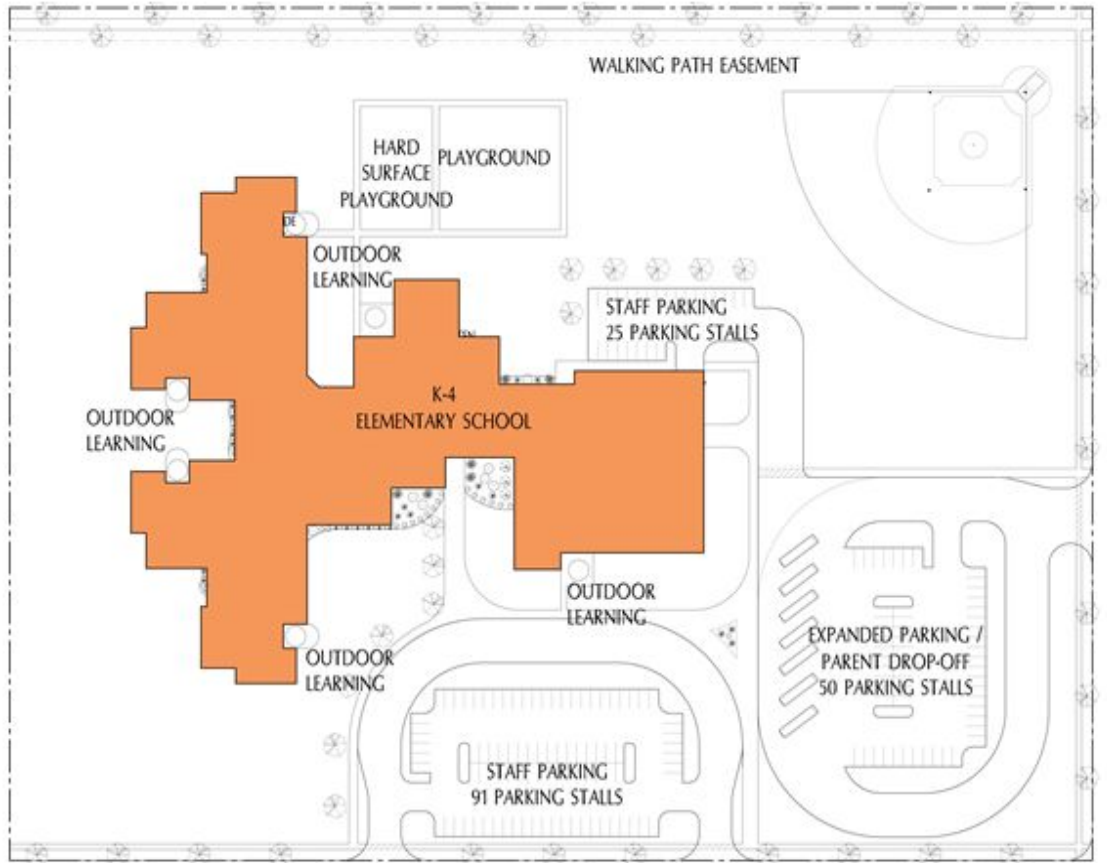
- Secure entrances at all K-12 schools
- Additional classroom space for our growing K-8 student enrollment
- Learning spaces for active learning, group activities and projects
- Buildings designed for age-appropriate learning experiences
- Performing arts space for student and community use

# New Construction

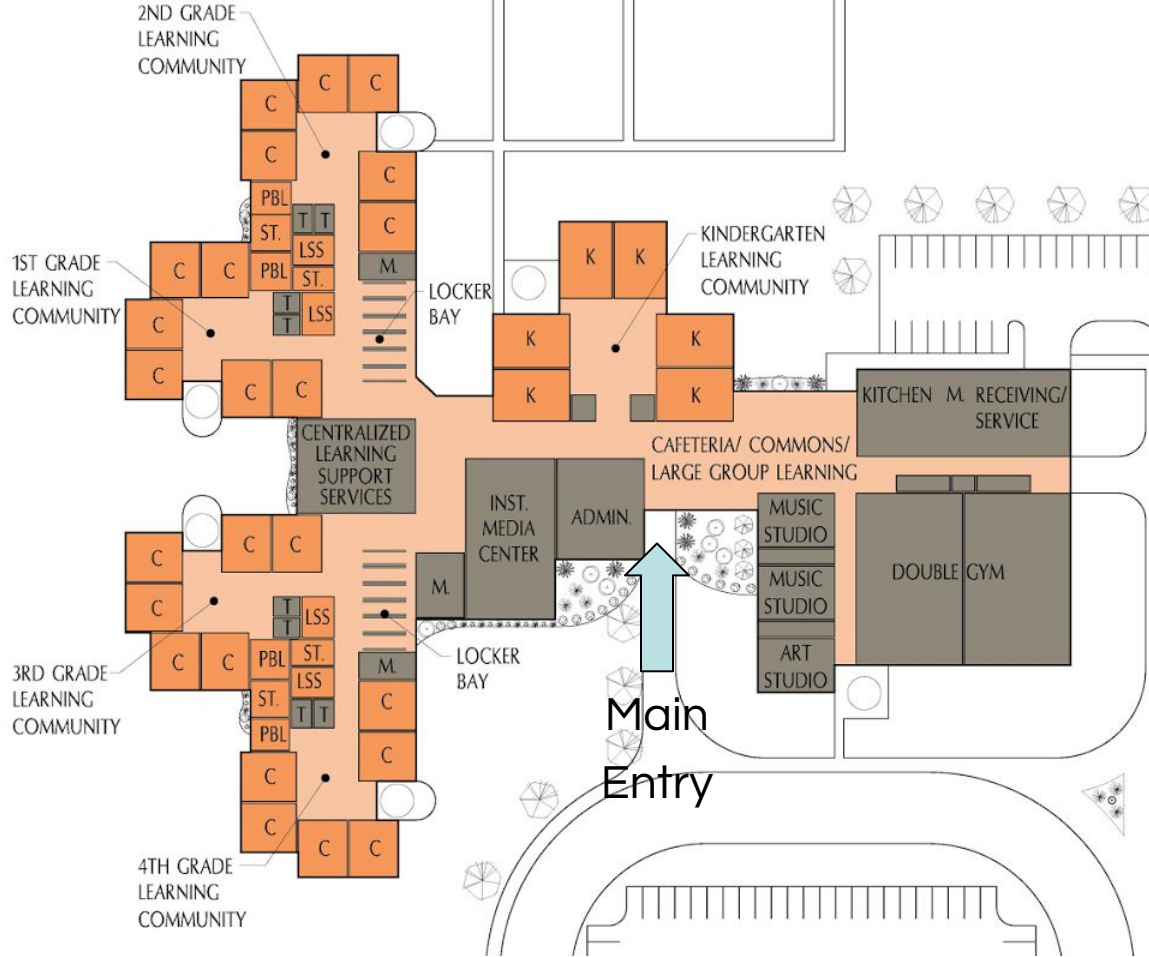
- Horizon Grades 5-6 School,  
Auditorium and Security \$44,660,141
- New K-4 Elementary School \$25,582,113



17.8 Acres  
775,000 SF

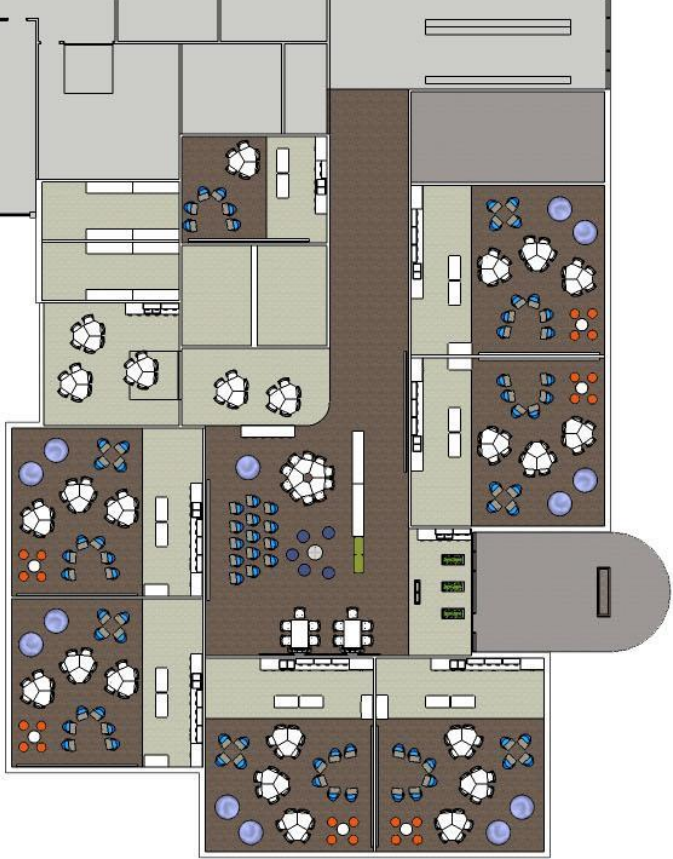


- 106,000 SF
- Grade level learning communities
- 750 Students
- Centralized learning support services

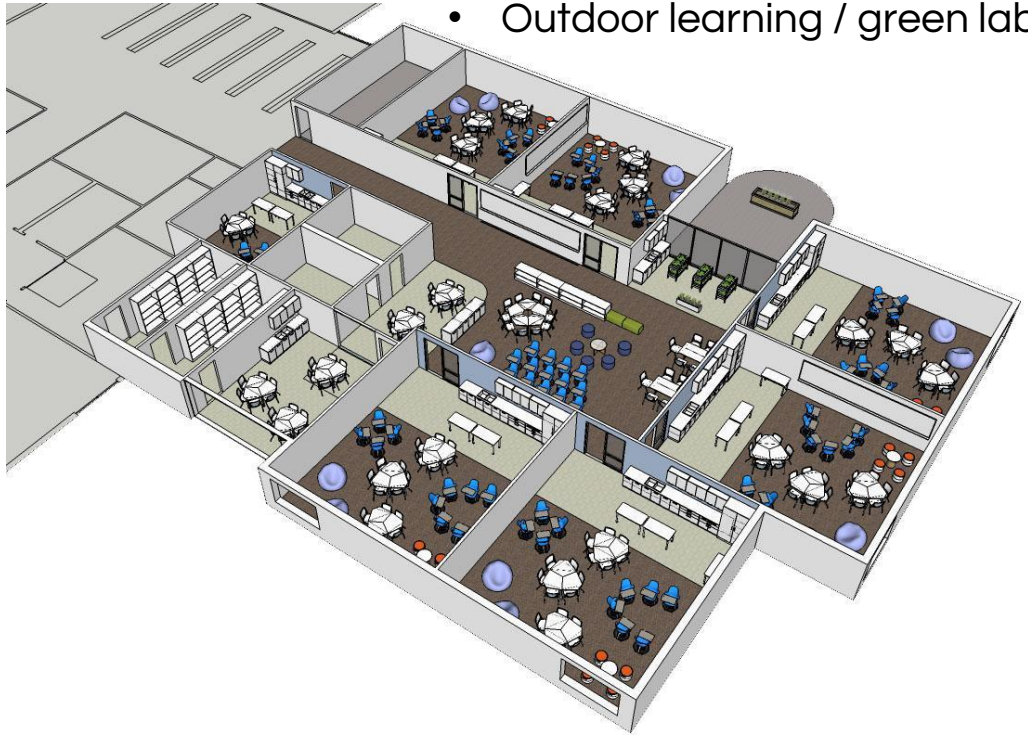


K-4 Elementary School – Floor Plan





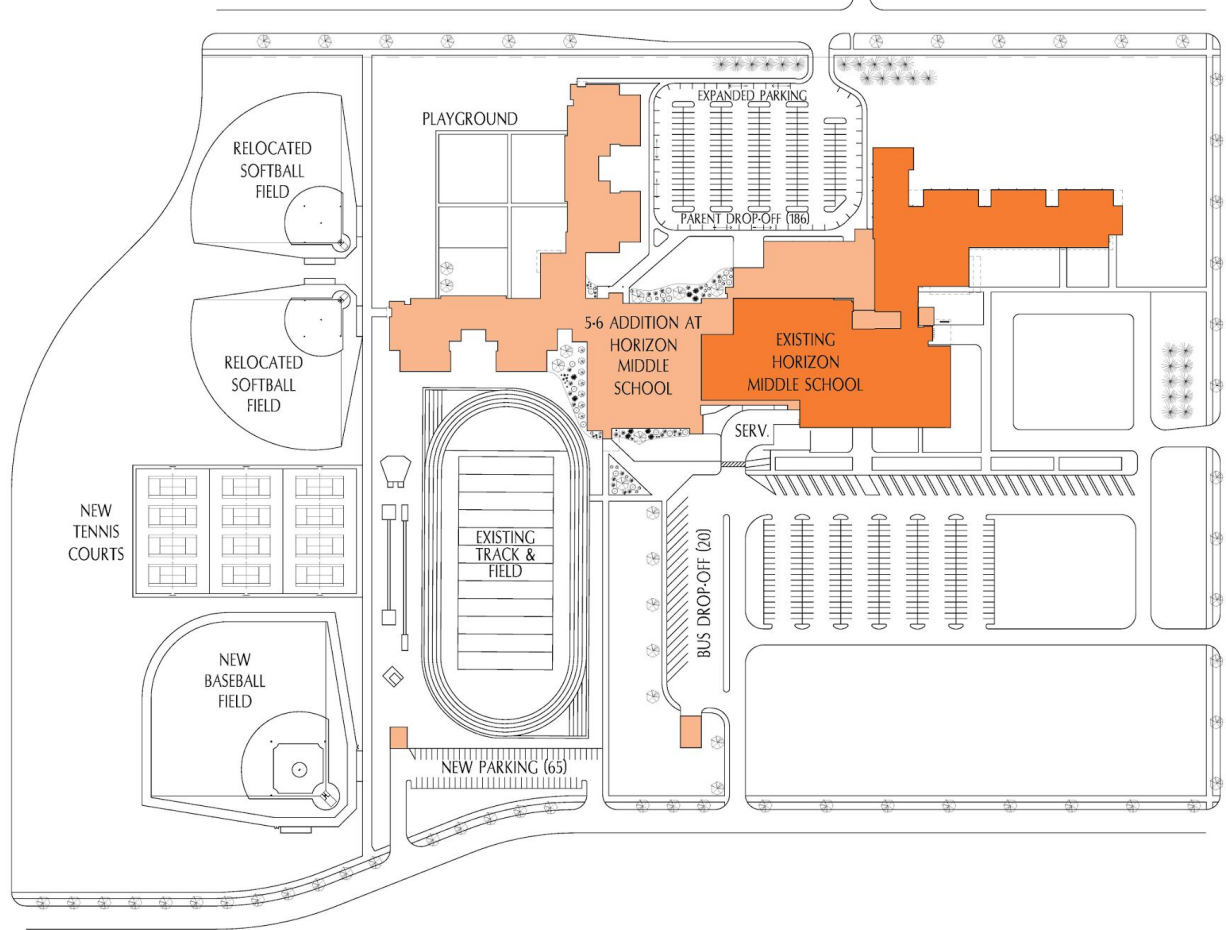
- Flexible learning spaces
- 6 Classrooms
- Maker lab
- Outdoor learning / green lab





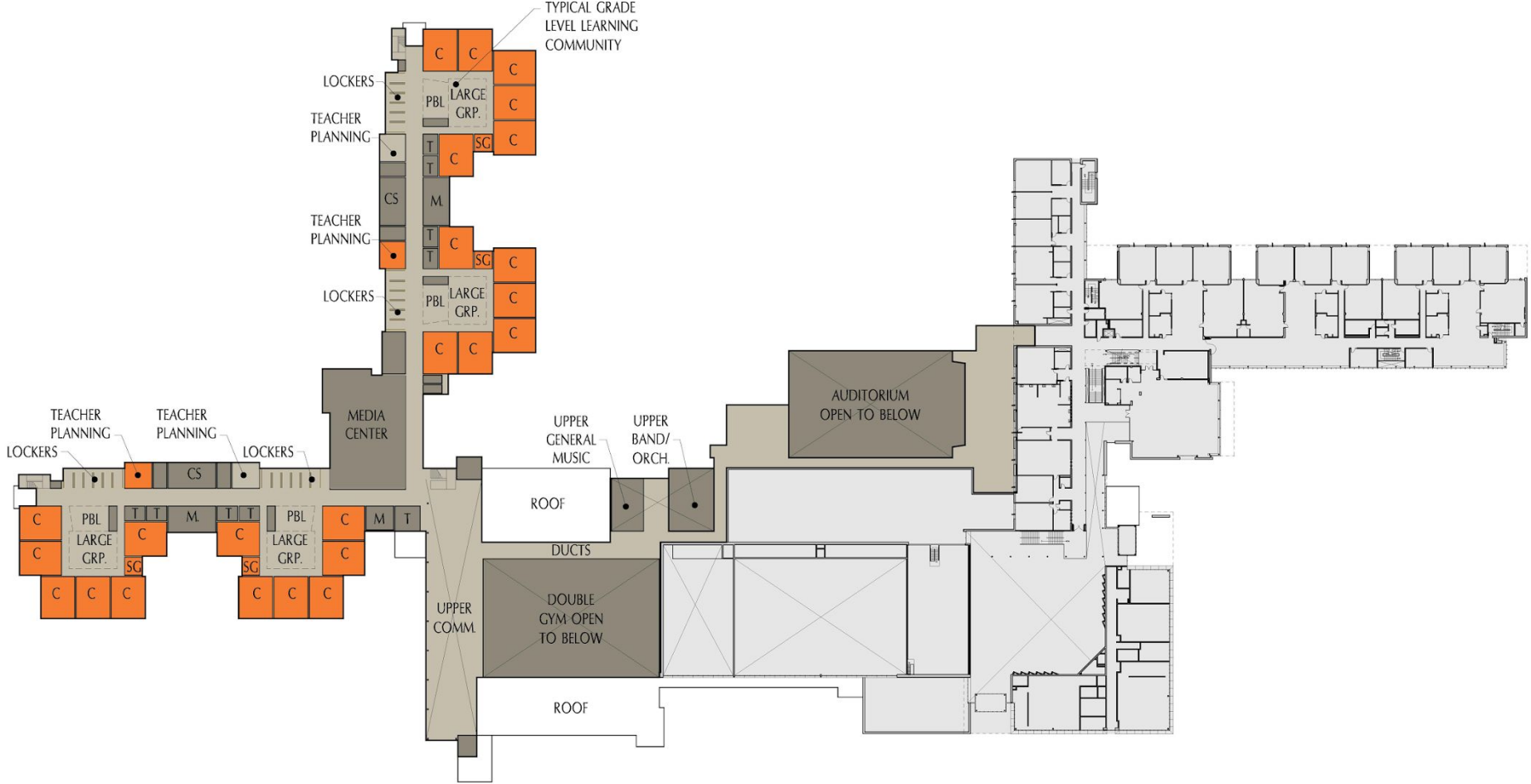
# K-4 Elementary School





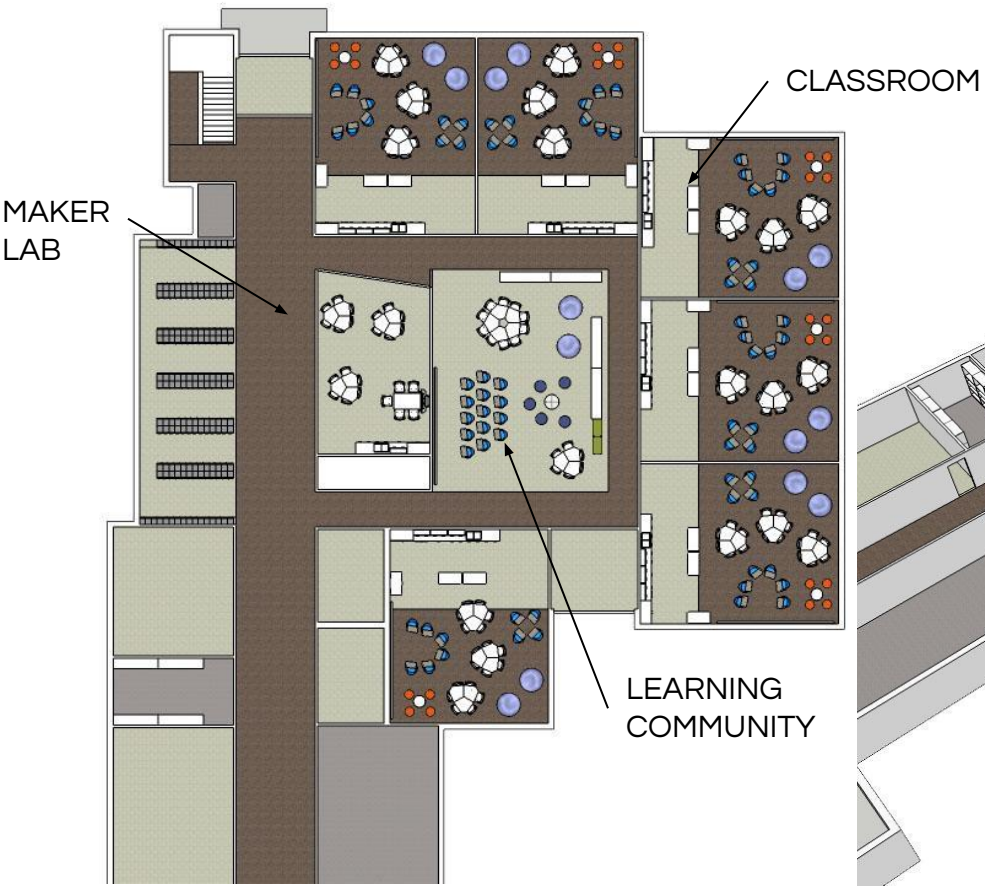


# 5<sup>th</sup>-6<sup>th</sup> Grade Horizon School – 1<sup>st</sup> Floor



# 5<sup>th</sup>-6<sup>th</sup> Grade Horizon School – 2<sup>nd</sup> Floor







Current Horizon Campus





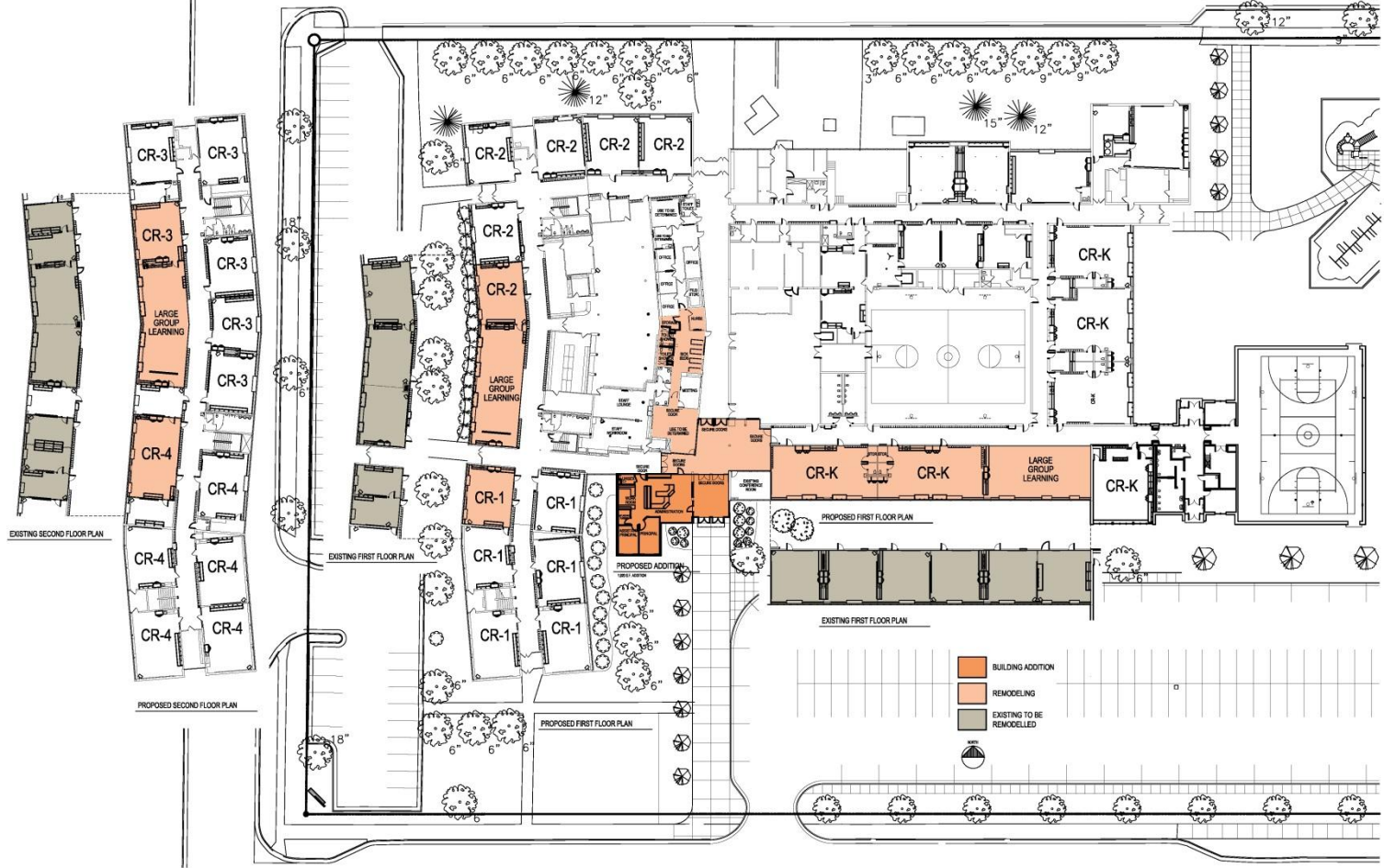
# 5<sup>th</sup>-8<sup>th</sup> Grade Horizon Campus





# Renovations/Security Upgrades

Ellen Hopkins	\$2,221,285
Robert Asp	\$2,220,285
S.G. Reinertsen	\$2,810,293
Probstfield Center	\$119,750
Moorhead High School	\$359,250







# Robert Asp Renovation – New Entrance







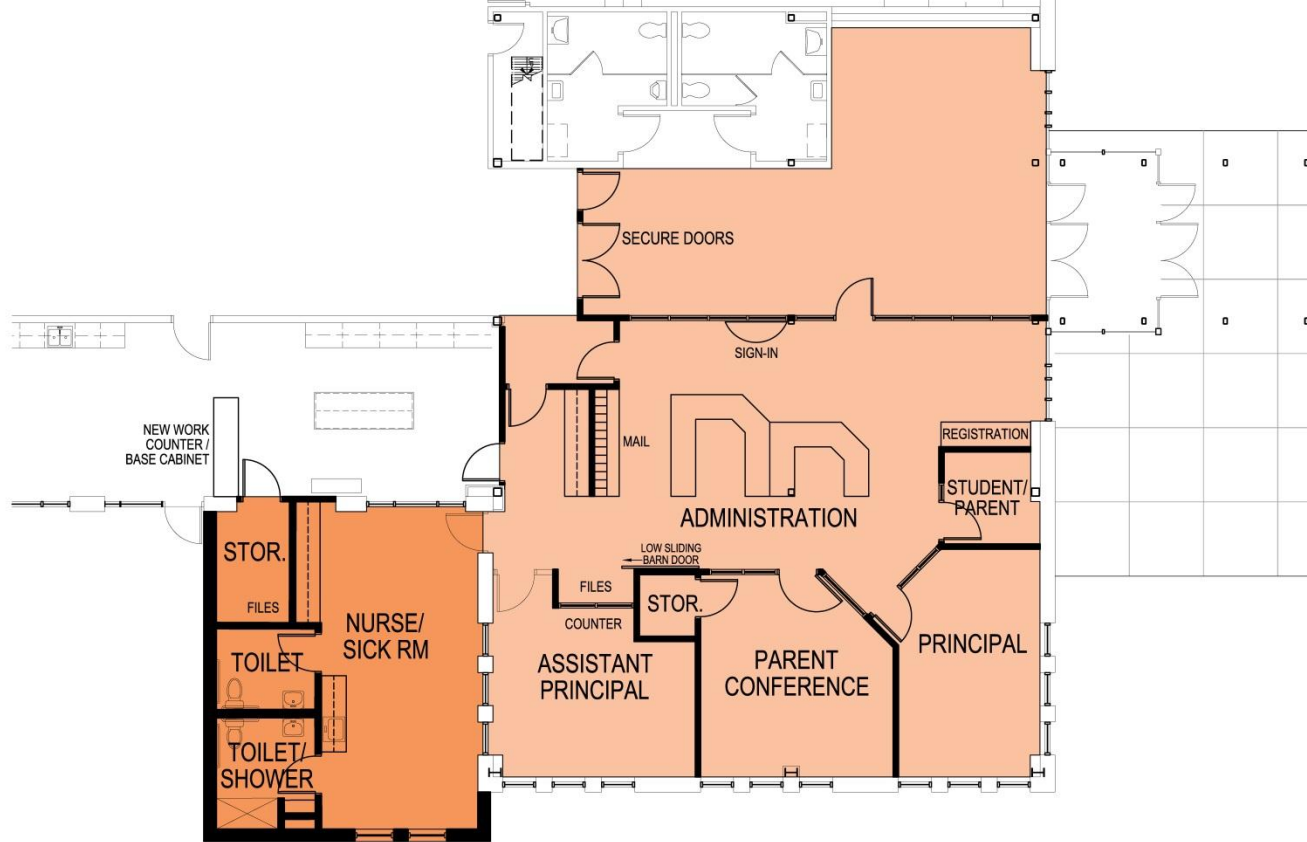












**PROPOSED ADDITION**

600 S.F. ADDITION

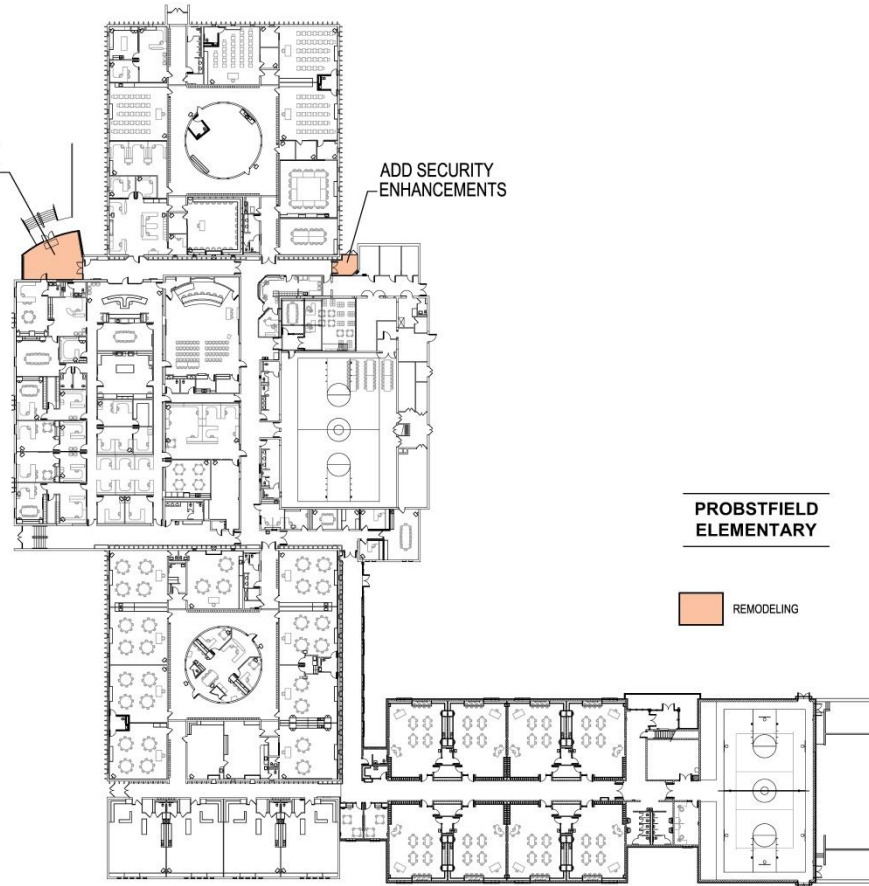


# S.G. Reinertsen – Administration Offices



ADD SECURITY ENHANCEMENTS

ADD SECURITY ENHANCEMENTS

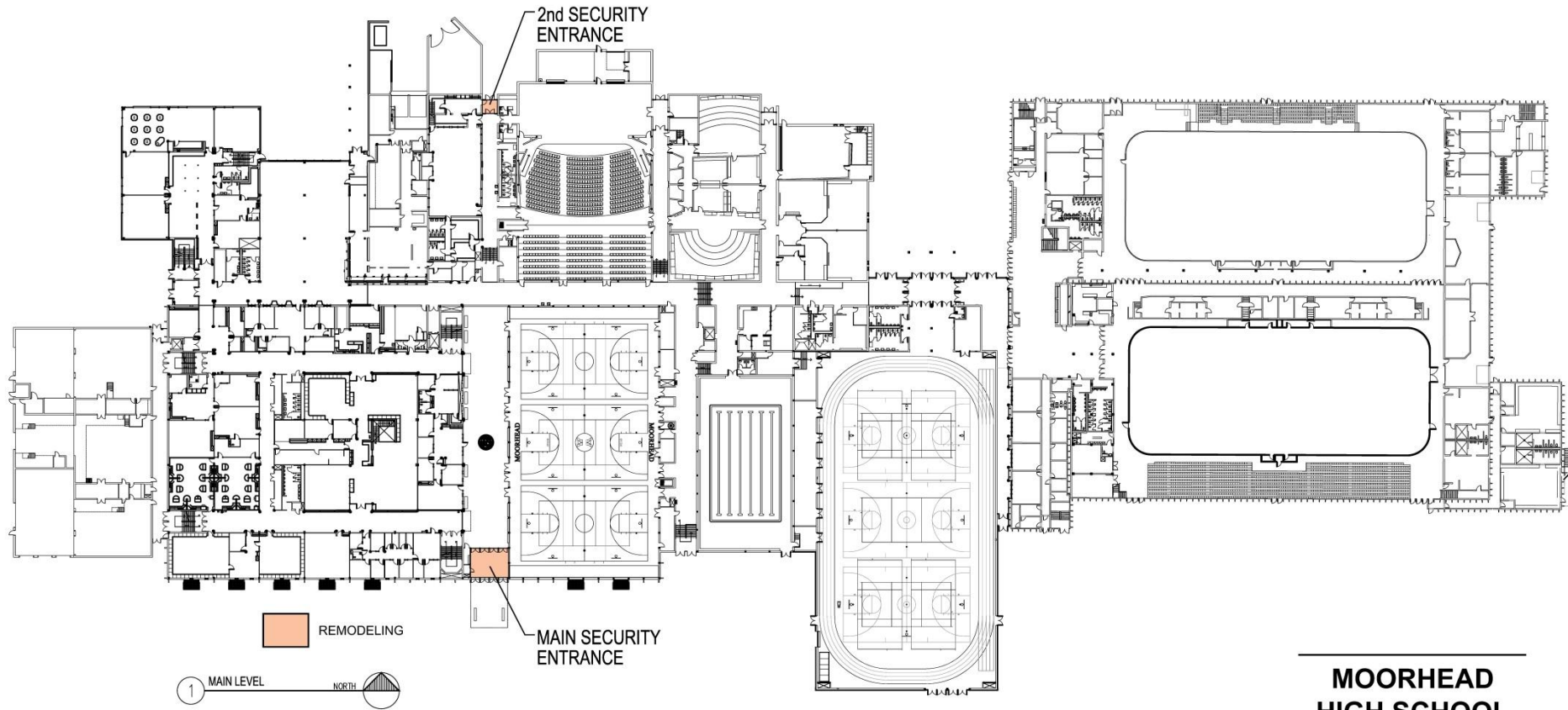


**PROBSTFIELD  
ELEMENTARY**

REMODELING

1 FIRST FLOOR PLAN  
SCALE: 1/32"





**MOORHEAD  
HIGH SCHOOL**



Moorhead High School



# S.G. Reinertsen – Then and Now



*Opened 2004*



*Spring 2015*

# Horizon – Then and Now

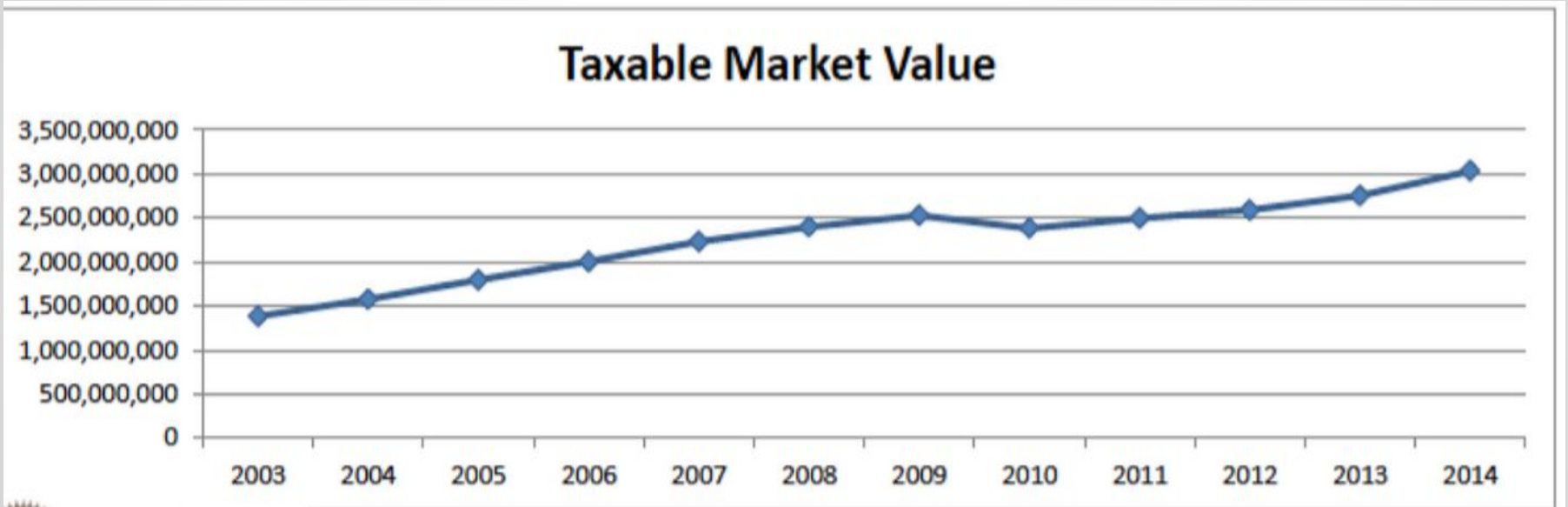


*Opened 2004*



*Spring 2015*

# Increase in Moorhead's Tax Base



The average percentage change is 7.5%, from 2003 to 2014.



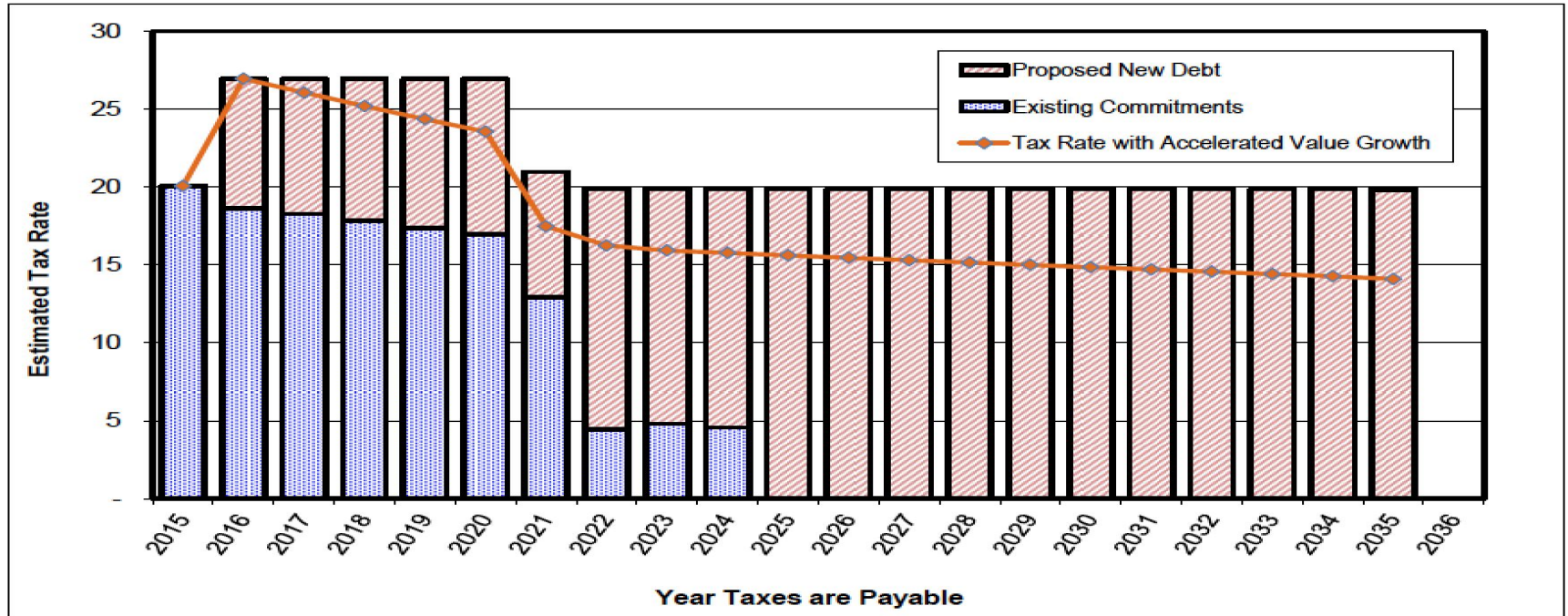
# Impact of Community Growth

Market Value	2002 Bond of \$64,000,000	2015 Bond for \$78,000,000
\$150,000	\$42 per month	\$9 per month
\$300,000	\$66 per month	\$20 per month

Tax Calculator can be found at [www.moorheadschoools.org/Referendum/](http://www.moorheadschoools.org/Referendum/)

**Moorhead Area Public Schools, ISD. 152**  
**Estimated Tax Rates for Capital and Debt Service Levies**  
**Existing Commitments and Proposed New Debt**

**\$78,280,000 Building Program**  
**Nov. 2015 Election; 20 Years**  
**Wrapped Around Existing Debt**  
 Date Prepared: August 18, 2015



# More Opportunities

## ***Coffee with the Mayor & Superintendent***

Visit with the mayor and superintendent to learn more about the city and school district. Sessions will be at **10 a.m. in the Moorhead Center Mall Atrium** on:

Oct. 21    Jan. 20    May 18

## ***State of the District Session***

Learn about the district and upcoming referendum at this free session. RSVP at 284-3400 or online at [communityed.moorheadschoools.org](http://communityed.moorheadschoools.org).

Oct. 22    7 p.m., Probstfield Center Board Room, 2410 14th St. S.

## ***Information Session hosted by League of Women Voters***

Learn about the district and upcoming referendum at this session.

Oct. 28    7 p.m., Moorhead Public Library, 118 5th St. S., Moorhead


# Sample Ballot

OFFICIAL BALLOT

Judge Judge

ISO NO. 152 STATE OF MINNESOTA NOVEMBER 3, 2015

**SPECIAL ELECTION BALLOT**  
**INDEPENDENT SCHOOL DISTRICT NO. 152**  
**(MOORHEAD AREA PUBLIC SCHOOLS), MINNESOTA**  
**NOVEMBER 3, 2015**

**INSTRUCTIONS TO VOTERS:**  
To vote, completely fill in the oval(s) next to your choice(s) like this: 

To vote for a question, fill in the oval next to the word "Yes" on that question. To vote against a question, fill in the oval next to the word "No" on that question.

**SCHOOL DISTRICT QUESTION**

**APPROVAL OF SCHOOL DISTRICT BOND ISSUE**

Shall the school board of Independent School District No. 152 (Moorhead Area Public Schools) be authorized to issue its general obligation school building bonds in an amount not to exceed \$78,280,000 to provide funds for the acquisition and betterment of school sites and facilities, including the construction and equipping of a K-4 elementary school facility and 2 grades 5 and 6 addition to the Horlick Middle School facility and the remodeling, repair, renovation, equipping, upgrading and construction of electric conductor entries and safety and security upgrades to the Ellen Hopkins Elementary School, the Robert Asd Elementary School, the S.D. Hainertsen Elementary School, the Protoshield Center for Education, and the Moorhead High School facilities?

Yes

No

**BY VOTING "YES" ON THIS BALLOT QUESTION, YOU ARE VOTING FOR A PROPERTY TAX INCREASE.**

ISO 152 MOORHEAD 8922

© Election Systems & Software, Inc. 1991-2015

A voter must be registered to vote to be eligible to vote in this election. An unregistered individual may register to vote at the polling place on election day.

If you live in:	You will vote at:
Moorhead City Ward 1 (Precincts 1 and 2) Georgetown City Georgetown Township Kragnes Township Moland Township Morken Township Oakport Township	<b>Combined Polling Place 1:</b> St. Francis de Sales Church 601 15th Ave. N. Moorhead, MN 56560
Moorhead City Ward 2 (Precincts 3, 4, 5a and 5b) Glyndon Township	<b>Combined Polling Place 2:</b> Moorhead Youth Hockey Arena 707 SE Main Ave. Moorhead, MN 56560
Moorhead City Ward 3 (Precincts 6a, 6b, 7 and 8) Holy Cross Township Kurtz Township Moorhead Township	<b>Combined Polling Place 3:</b> Bethesda Lutheran Church 401 40th Ave. S. Moorhead, MN 56560
Moorhead City Ward 4 (Precincts 9, 10, 11 and 12) Elmwood Township Sabin City Alliance Township	<b>Combined Polling Place 4:</b> Lutheran Church of the Good Shepherd 4000 28th St. S. Moorhead, MN 56560
Dilworth City	<b>Polling Place 5:</b> Dilworth Community Center 709 1st Ave. NW Dilworth, MN 56529

# Where to vote?

## Polling Sites for Special Election

# Application for Absentee Ballot

To vote by absentee ballot for the Nov. 3 election, voters must complete and return an application for an absentee ballot. Download the absentee ballot application from [www.moorheadschoools.org/referendum](http://www.moorheadschoools.org/referendum) and return it to the Election Clerk at Moorhead Area Public Schools, 2410 14th St. S., Moorhead, MN 56560.

Absentee ballot applications also are available in each school office.

The Office of the Minnesota Secretary of State website at <http://www.sos.state.mn.us> provides information relating to frequently asked questions on registering and voting, including absentee ballot information.