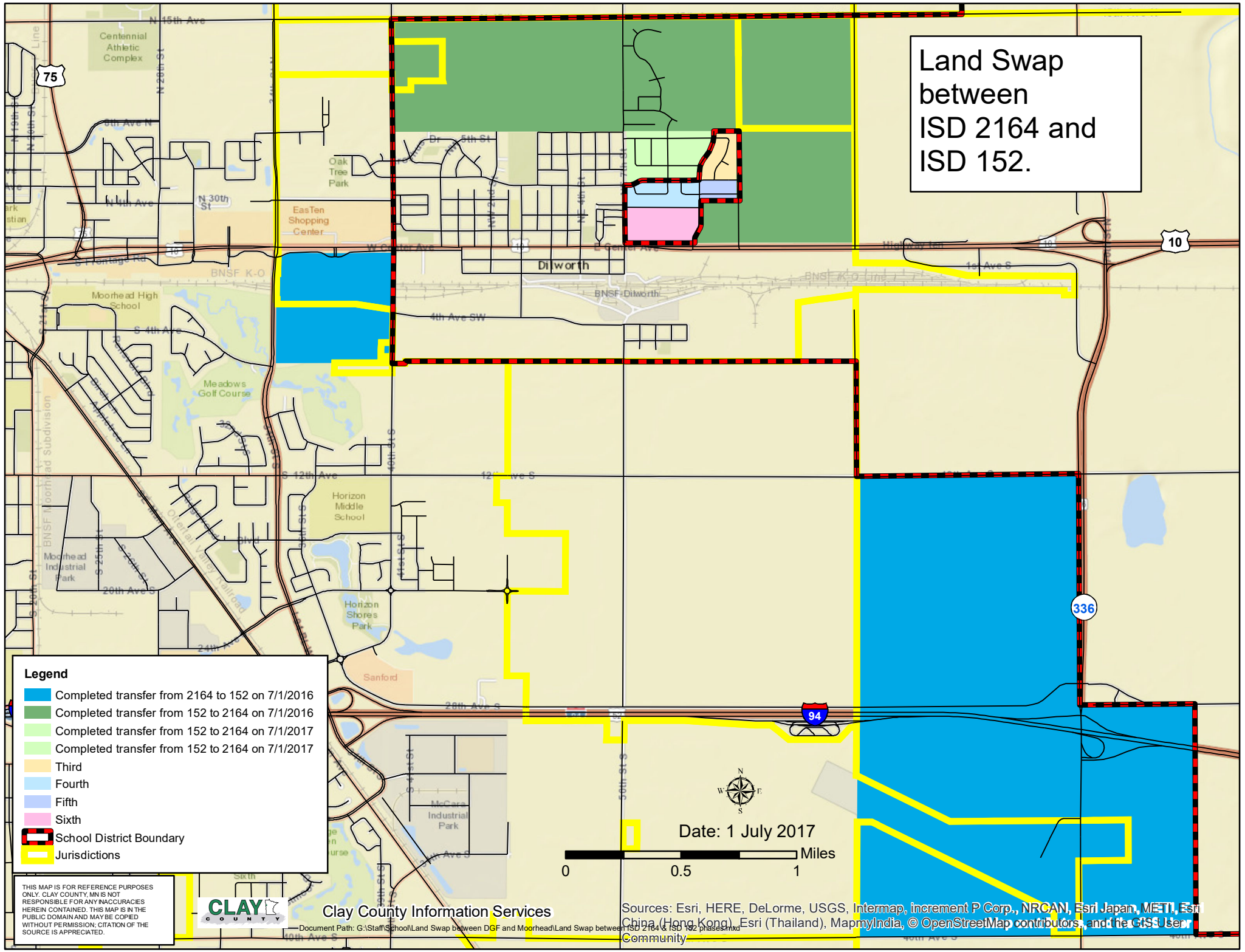


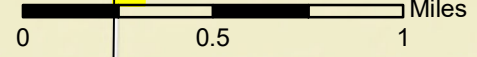
Land Swap  
between  
ISD 2164 and  
ISD 152.



**Legend**

- Blue: Completed transfer from 2164 to 152 on 7/1/2016
- Green: Completed transfer from 152 to 2164 on 7/1/2016
- Light Green: Completed transfer from 152 to 2164 on 7/1/2017
- Orange: Completed transfer from 152 to 2164 on 7/1/2017
- Light Blue: Third
- Blue-Gray: Fourth
- Pink: Fifth
- Light Purple: Sixth
- Red Dashed Line: School District Boundary
- Yellow Line: Jurisdictions

Date: 1 July 2017



THIS MAP IS FOR REFERENCE PURPOSES ONLY. CLAY COUNTY, MN IS NOT RESPONSIBLE FOR ANY INACCURACIES HEREIN CONTAINED. THIS MAP IS IN THE PUBLIC DOMAIN AND MAY BE COPIED WITHOUT PERMISSION. CITATION OF THE SOURCE IS APPRECIATED.



Clay County Information Services

Sources: Esri, HERE, DeLorme, USGS, Intermap, increment P Corp., NRCAN, Esri Japan, METI, Esri China (Hong Kong), Esri (Thailand), MapmyIndia, © OpenStreetMap contributors, and the GIS User Community